

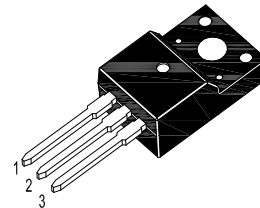
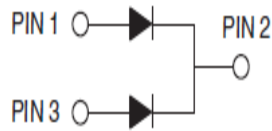
WSAT30U65D-HAF

Schottky Barrier Rectifier

Reverse Voltage - 65 V
Forward Current - 30 A

Features

- High reliability
- Low reverse current
- Halogen and Antimony Free(HAF), RoHS compliant



1.Anode 2.Cathode 3.Anode
TO-220F Plastic Package

Applications

- General Rectification

Absolute Maximum Ratings ($T_a = 25^\circ\text{C}$)

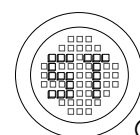
Parameter	Symbol	Value	Unit
Repetitive Peak Reverse Voltage	V_{RRM}	65	V
Average Forward Rectified Current Total Device Per Diode	$I_{F(AV)}$	30 15	A
Peak Forward Surge Current 8.3 ms Single Half-sine-wave Superimposed on Rated Load	I_{FSM}	220	A
Operating Junction Temperature	T_j	150	$^\circ\text{C}$
Storage Temperature Range	T_{stg}	- 55 to + 150	$^\circ\text{C}$

Thermal Characteristics

Parameter	Symbol	Max.	Unit
Thermal Resistance-Junction to Case	$R_{\theta JC}$	4.3	$^\circ\text{C/W}$

Characteristics at $T_a = 25^\circ\text{C}$

Parameter	Symbol	Typ.	Max.	Unit
Forward Voltage at $I_F = 15\text{ A}$ at $I_F = 30\text{ A}$ at $I_F = 15\text{ A}, T_a = 125^\circ\text{C}$ at $I_F = 30\text{ A}, T_a = 125^\circ\text{C}$	V_F	- - 0.6 0.82	0.69 0.9 - -	V
Reverse Current at $V_R = 65\text{ V}$ at $V_R = 65\text{ V}, T_a = 125^\circ\text{C}$	I_R	- 30	0.45 -	mA



WSAT30U65D-HAF

Electrical Characteristics Curves

Fig 1. Reverse Characteristics Curve

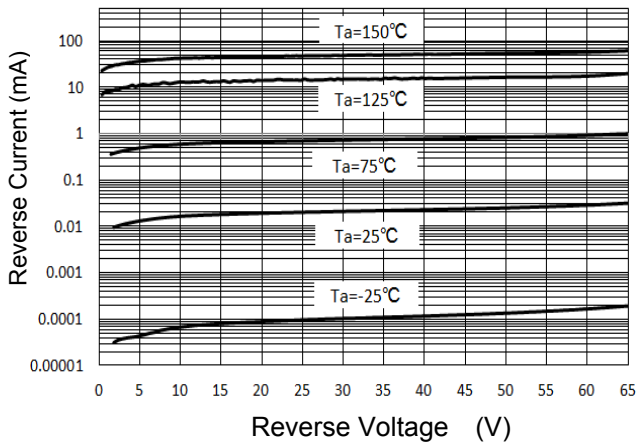


Fig 2. Forward Characteristics Curve

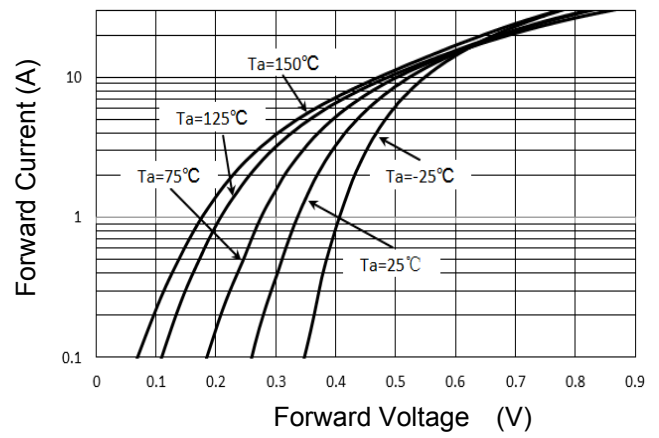


Fig 3. Forward Current Derating Curve

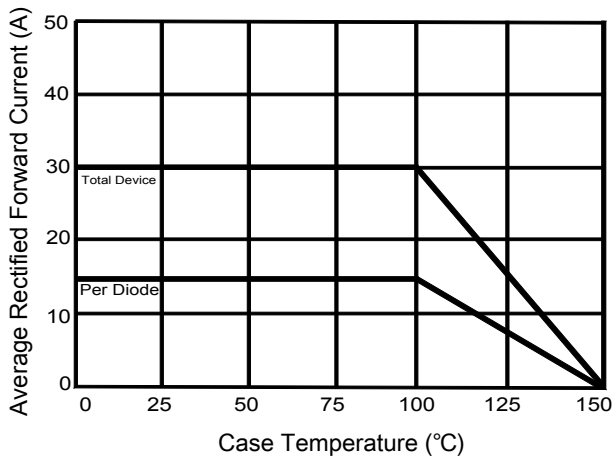


Fig 4. Junction Capacitance

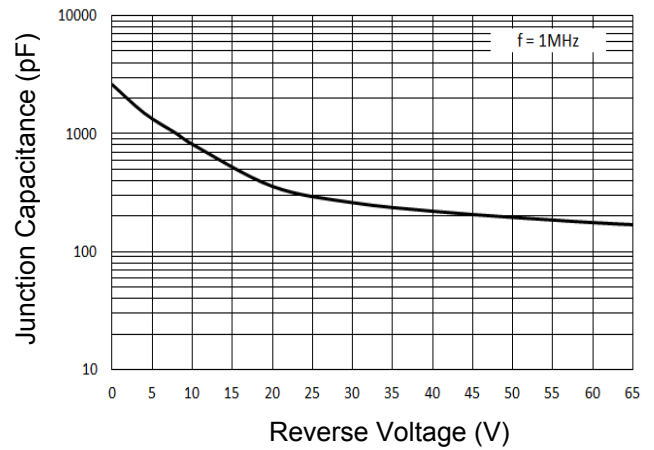
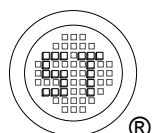
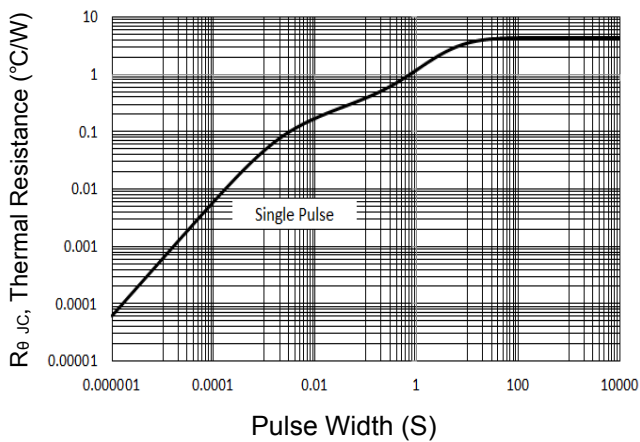


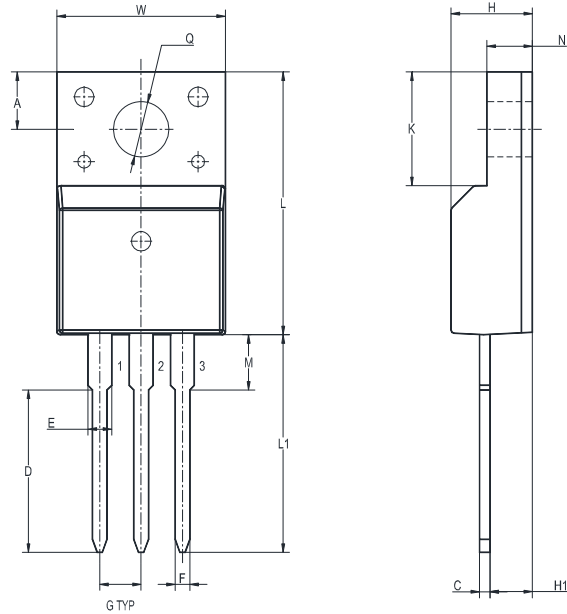
Fig 5. Thermal Resistance Curve



WSAT30U65D-HAF

Package Outline Dimensions (Units: mm)

TO-220F



UNIT	A	C	D	E	F	G	W	H	H1	Q	L	L1	M	K	N
mm	3.5	0.7	10.3	1.5	0.9	2.54	10.5	4.9	2.9	3.4	16	13.5	3.5	6.7	2.8
	2.8	0.4	9.7	1.1	0.7	TYP.	9.5	4.5	2.5	2.9	15	12.5	2.9	6.2	2.3

Marking information

" SAT30U65D " = Part No.

" ***** " = Date Code Marking

Font type: Arial

