

# RB550VA-30

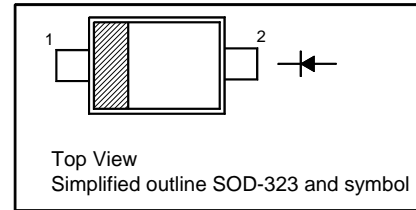
## Silicon Epitaxial Planar Schottky Barrier Rectifier

### Features

- High reliability
- Low forward voltage
- Low reverse current

### PINNING

PIN	DESCRIPTION
1	Cathode
2	Anode

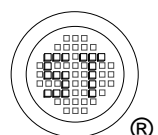


### Absolute Maximum Ratings ( $T_a = 25^\circ\text{C}$ unless otherwise specified)

Parameter	Symbol	Value	Unit
Repetitive Peak Reverse Voltage	$V_{RRM}$	30	V
Reverse Voltage	$V_R$	30	V
Average Forward Rectified Current	$I_{F(AV)}$	1	A
Peak Forward Surge Current ( $t_p = 10$ ms)	$I_{FSM}$	3	A
Junction Temperature	$T_j$	150	$^\circ\text{C}$
Storage Temperature Range	$T_{stg}$	- 40 to + 150	$^\circ\text{C}$

### Characteristics at $T_a = 25^\circ\text{C}$

Parameter	Symbol	Min.	Typ.	Max.	Unit
Reverse Breakdown Voltage at $I_R = 100 \mu\text{A}$	$V_{(BR)R}$	30	-	-	V
Forward Voltage at $I_F = 700$ mA at $I_F = 1$ A	$V_F$	- -	- -	0.48 0.52	V
Reverse Current at $V_R = 10$ V	$I_R$	-	-	20	$\mu\text{A}$
Total Capacitance at $V_R = 10$ V, $f = 1$ MHz	$C_T$	-	30	-	pF



## Electrical Characteristic Curves

Fig 1. Reverse Characteristic Curve

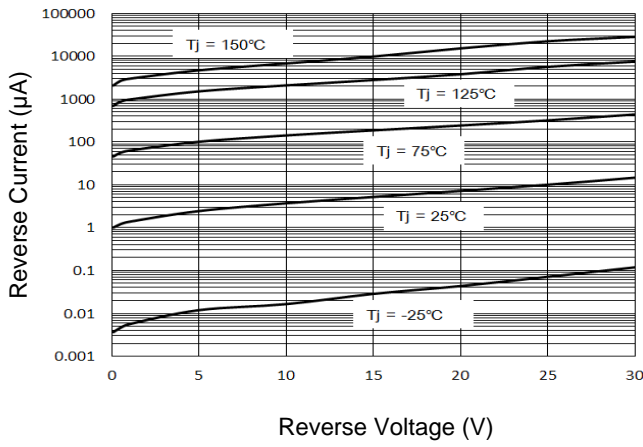


Fig 2. Forward Characteristic Curve

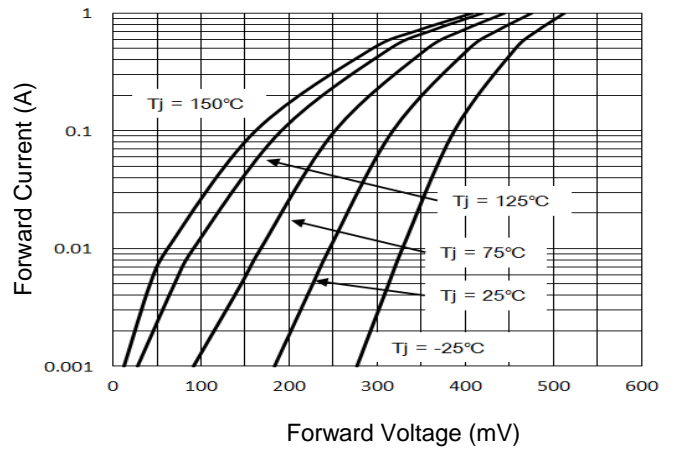


Fig 3. Junction Capacitance

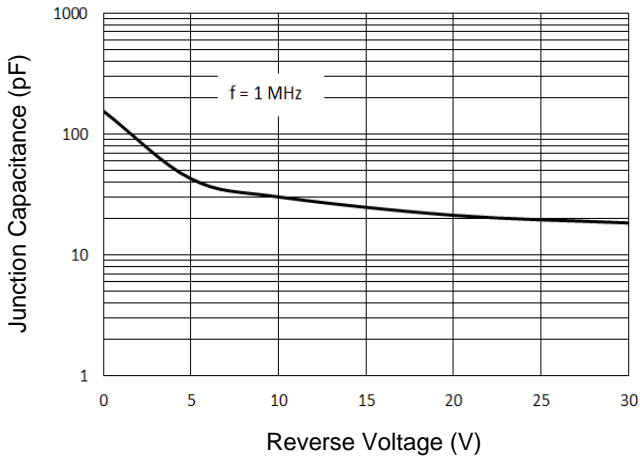
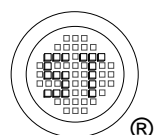
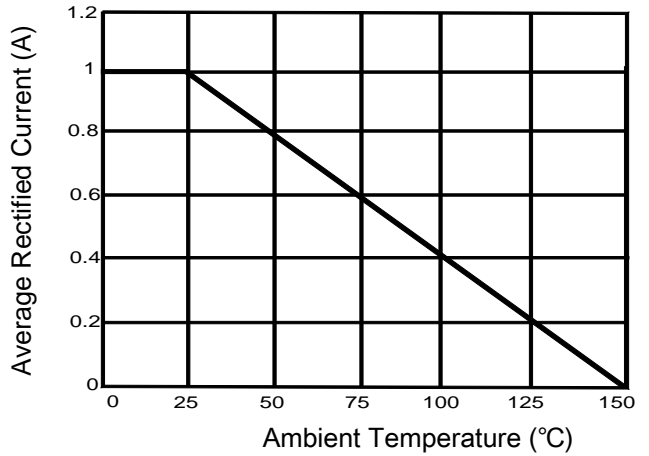


Fig 4. Average Rectified Current Derating Curve

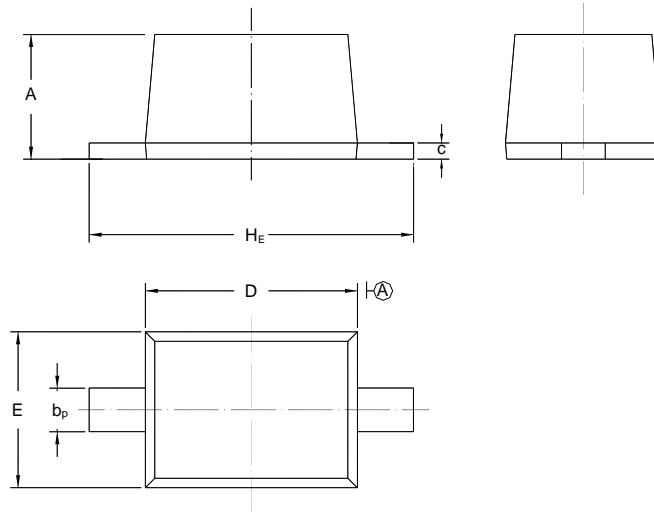


# RB550VA-30

## PACKAGE OUTLINE

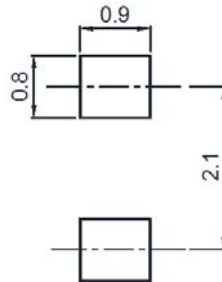
Plastic surface mounted package; 2 leads

SOD-323



UNIT	A	b <sub>p</sub>	C	D	E	H <sub>E</sub>
mm	1.10 0.80	0.40 0.25	0.15 0.10	1.80 1.60	1.35 1.15	2.80 2.30

## Recommended Soldering Footprint



## Packing information

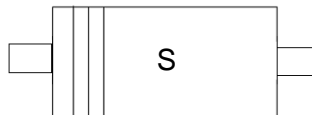
Package	Tape Width (mm)	Pitch		Reel Size		Per Reel Packing Quantity
		mm	inch	mm	inch	
SOD-323	8	4 ± 0.1	0.157 ± 0.004	178	7	3,000

## Marking information

" S " = Part No.

" III " = Cathode line

Font type: Arial



Disclaimer: Our company reserve the right to make modifications, enhancements, improvements, corrections or other changes to improve product design, functions and reliability, anytime without notice. Semtech Electronics Limited makes no warranties, representations or warranties regarding the suitability of its products for any particular purpose, and does not accept any liability arising from the application or use of any product or circuit such as: Apply to medical, military, aircraft, space or life support equipment and expressly waive any and all liability, including but not limited to special, consequential or collateral damage.

