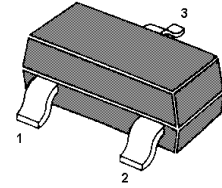
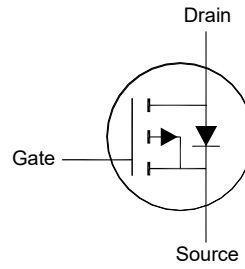


MMFTP2307A

P-Channel Enhancement Mode MOSFET

Features

- Surface-mounted package



1. Gate 2. Source 3. Drain
SOT-23 Plastic Package

Absolute Maximum Ratings (at $T_a = 25^\circ\text{C}$ unless otherwise specified)

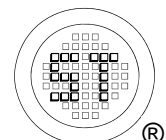
Parameter	Symbol	Value	Unit
Drain-Source Voltage	$-V_{DS}$	20	V
Gate-Source Voltage	V_{GS}	± 12	V
Drain Current	$-I_D$	6	A
Peak Drain Current, Pulsed ¹⁾	$-I_{DM}$	24	A
Power Dissipation	P_D	1.6	W
Operating Junction Temperature	T_j	150	$^\circ\text{C}$
Storage Temperature Range	T_{stg}	- 55 to + 150	$^\circ\text{C}$

Thermal Characteristics

Parameter	Symbol	Max.	Unit
Thermal Resistance - Junction to Ambient ²⁾	$R_{\theta JA}$	78 125	$^\circ\text{C/W}$
		$t \leq 10 \text{ s}$	
		Steady state	

¹⁾ Pulse Test: Pulse Width $\leq 100 \mu\text{s}$, Duty Cycle $\leq 2\%$, Repetitive rating, pulse width limited by junction temperature $T_{J(\text{MAX})} = 150^\circ\text{C}$.

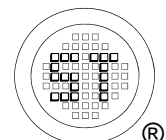
²⁾ Device mounted on FR-4 substrate PC board, 2oz copper, with 1-inch square copper plate in still air.



MMFTP2307A

Characteristics at $T_a = 25^\circ\text{C}$ unless otherwise specified

Parameter	Symbol	Min.	Typ.	Max.	Unit
STATIC PARAMETERS					
Drain-Source Breakdown Voltage at $-I_D = 250 \mu\text{A}$	$-BV_{DSS}$	20	-	-	V
Drain-Source Leakage Current at $-V_{DS} = 16 \text{ V}$	$-I_{DSS}$	-	-	1	μA
Gate Leakage Current at $V_{GS} = \pm 12 \text{ V}$	I_{GSS}	-	-	± 100	nA
Gate-Source Threshold Voltage at $V_{DS} = V_{GS}$, $-I_D = 250 \mu\text{A}$	$-V_{GS(th)}$	0.5	-	1	V
Drain-Source On-State Resistance at $-V_{GS} = 4.5 \text{ V}$, $-I_D = 6 \text{ A}$ at $-V_{GS} = 2.5 \text{ V}$, $-I_D = 3.7 \text{ A}$ at $-V_{GS} = 1.8 \text{ V}$, $-I_D = 2 \text{ A}$	$R_{DS(on)}$	-	25 31 40	29 40 60	$\text{m}\Omega$
DYNAMIC PARAMETERS					
Gate resistance at $V_{DS} = 0 \text{ V}$, $f = 1 \text{ MHz}$	R_g	-	4.5	-	Ω
Input Capacitance at $V_{GS} = 0 \text{ V}$, $-V_{DS} = 10 \text{ V}$, $f = 1 \text{ MHz}$	C_{iss}	-	1242	-	pF
Output Capacitance at $V_{GS} = 0 \text{ V}$, $-V_{DS} = 10 \text{ V}$, $f = 1 \text{ MHz}$	C_{oss}	-	188	-	pF
Reverse Transfer Capacitance at $V_{GS} = 0 \text{ V}$, $-V_{DS} = 10 \text{ V}$, $f = 1 \text{ MHz}$	C_{rss}	-	149	-	pF
Gate charge total at $-V_{DS} = 10 \text{ V}$, $-I_D = 6 \text{ A}$, $-V_{GS} = 10 \text{ V}$ at $-V_{DS} = 10 \text{ V}$, $-I_D = 6 \text{ A}$, $-V_{GS} = 4.5 \text{ V}$	Q_g	-	28.5 13	-	nC
Gate to Source Gate Charge at $-V_{DS} = 10 \text{ V}$, $-I_D = 6 \text{ A}$, $-V_{GS} = 4.5 \text{ V}$	Q_{gs}	-	2.9	-	nC
Gate to Drain Charge at $-V_{DS} = 10 \text{ V}$, $-I_D = 6 \text{ A}$, $-V_{GS} = 4.5 \text{ V}$	Q_{gd}	-	3.2	-	nC
Turn-On Delay Time at $-V_{GS} = 10 \text{ V}$, $-V_{DS} = 10 \text{ V}$, $-I_D = 6 \text{ A}$, $R_G = 3.3 \Omega$	$t_{d(on)}$	-	10	-	ns
Turn-On Rise Time at $-V_{GS} = 10 \text{ V}$, $-V_{DS} = 10 \text{ V}$, $-I_D = 6 \text{ A}$, $R_G = 3.3 \Omega$	t_r	-	34	-	ns
Turn-Off Delay Time at $-V_{GS} = 10 \text{ V}$, $-V_{DS} = 10 \text{ V}$, $-I_D = 6 \text{ A}$, $R_G = 3.3 \Omega$	$t_{d(off)}$	-	21	-	ns
Turn-Off Fall Time at $-V_{GS} = 10 \text{ V}$, $-V_{DS} = 10 \text{ V}$, $-I_D = 6 \text{ A}$, $R_G = 3.3 \Omega$	t_f	-	7	-	ns
Body-Diode PARAMETERS					
Diode Forward Voltage at $-I_S = 1 \text{ A}$, $V_{GS} = 0 \text{ V}$	$-V_{SD}$	-	-	1	V
Body-Diode Continuous Current	$-I_S$	-	-	6	A
Body Diode Reverse Recovery Time at $-I_S = 6 \text{ A}$, $di/dt = 100 \text{ A} / \mu\text{s}$	t_{rr}	-	10.4	-	ns
Body Diode Reverse Recovery Charge at $-I_S = 6 \text{ A}$, $di/dt = 100 \text{ A} / \mu\text{s}$	Q_{rr}	-	1.8	-	nc



Electrical Characteristics Curves

Fig. 1 Typical Output Characteristic

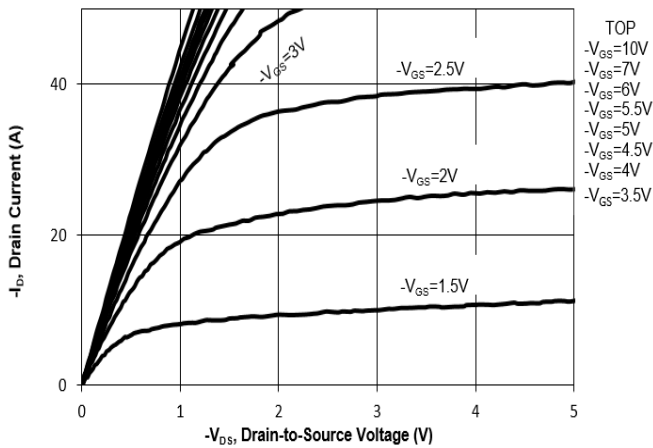


Fig. 2 Typical Transfer Characteristic

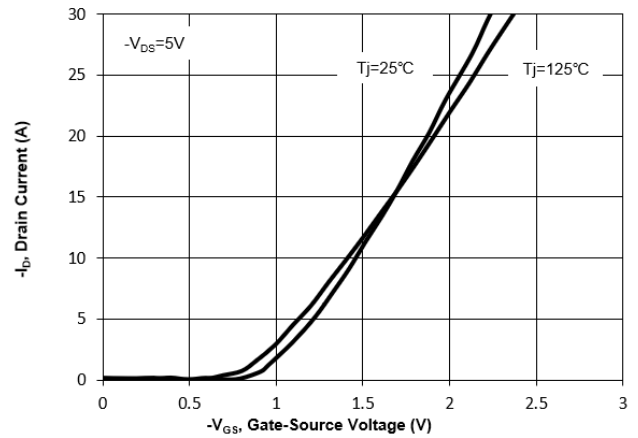


Fig. 3 on-Resistance vs Drain Current

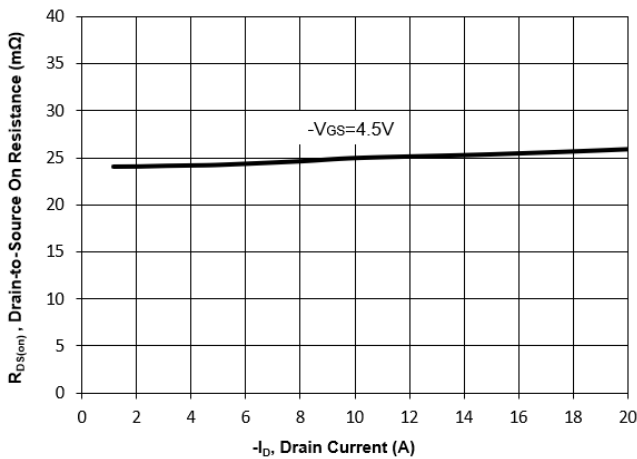


Fig. 4 on-Resistance vs. Gate Voltage

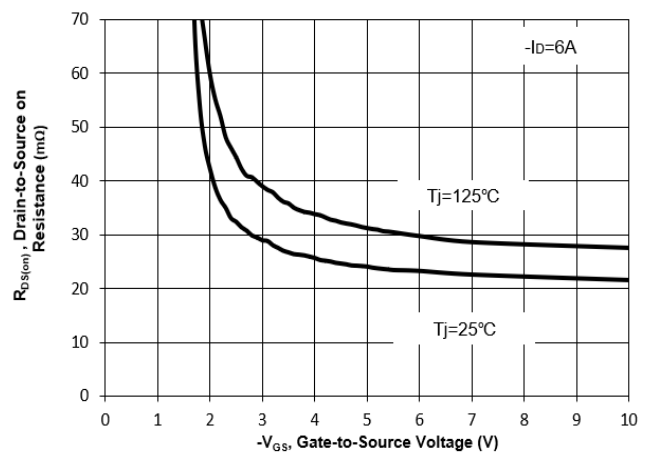


Fig. 5 on-Resistance vs. T_J

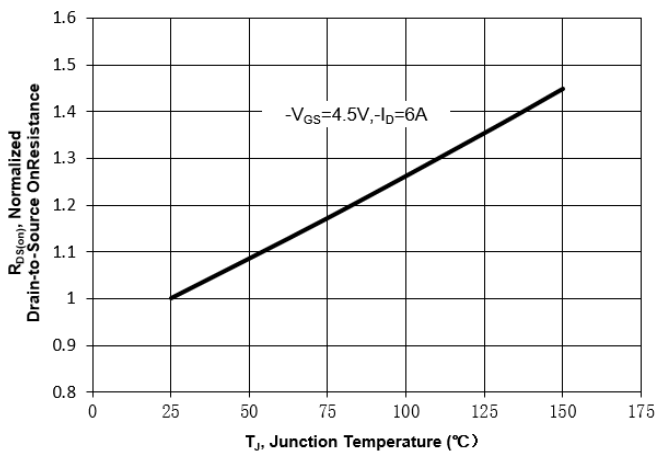
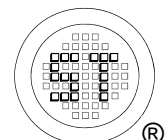
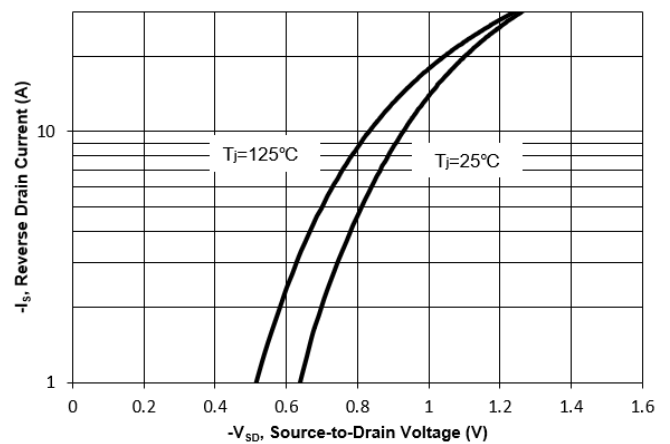


Fig. 6 Typical Forward Characteristic



Electrical Characteristics Curves

Fig. 7 Typical Junction Capacitance

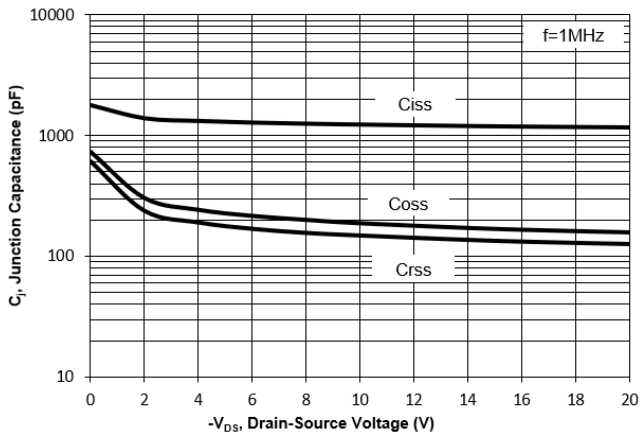


Fig. 8 Drain-Source Leakage Current vs. T_j

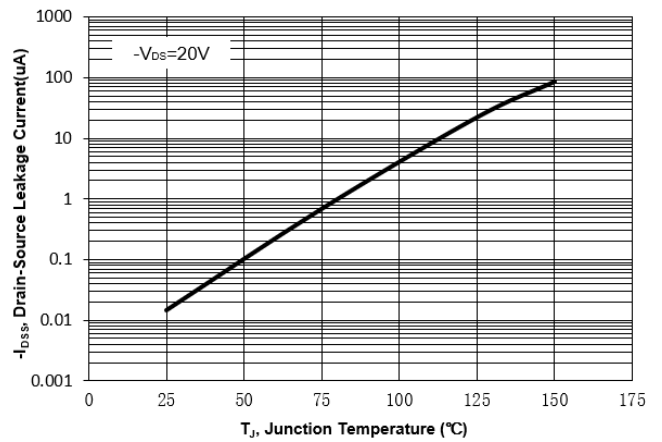


Fig. 9 $V_{(BR)DSS}$ vs. Junction Temperature

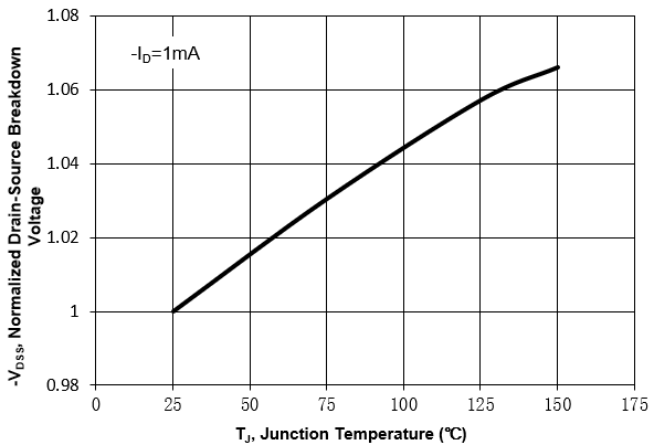


Fig. 10 Gate Threshold Variation vs. T_j

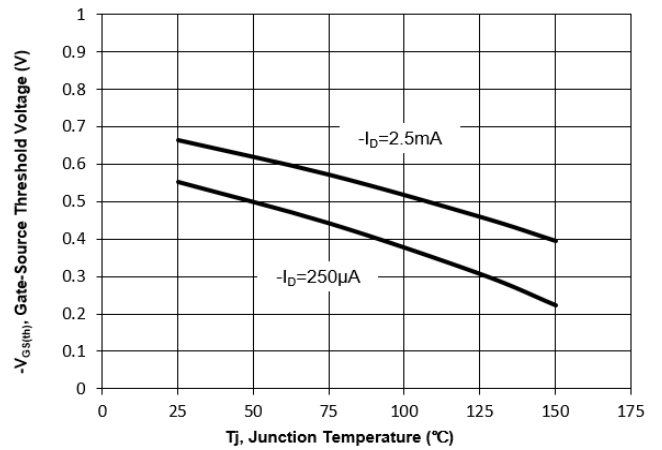
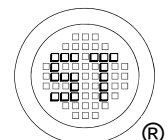
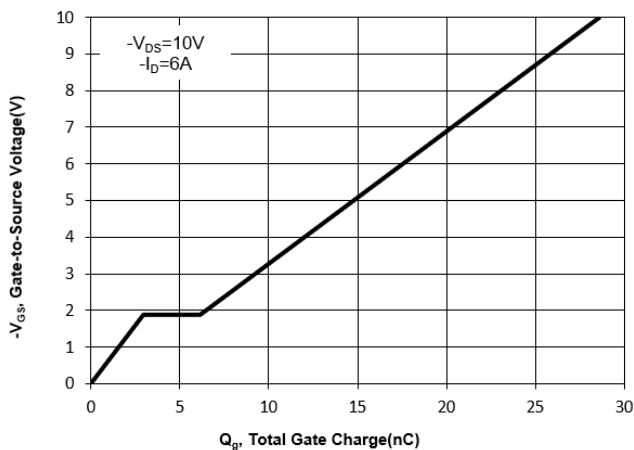


Fig. 11 Gate Charge



Test Circuits

Fig.1-1 Switching times test circuit

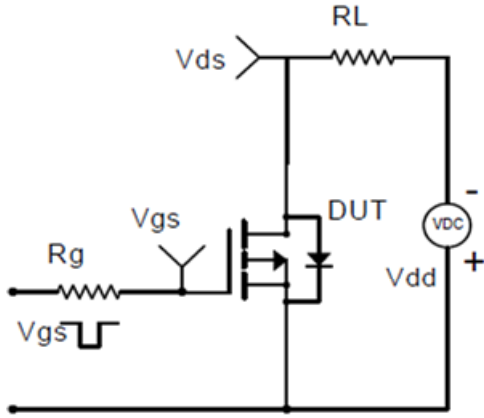


Fig.1-2 Switching Waveform

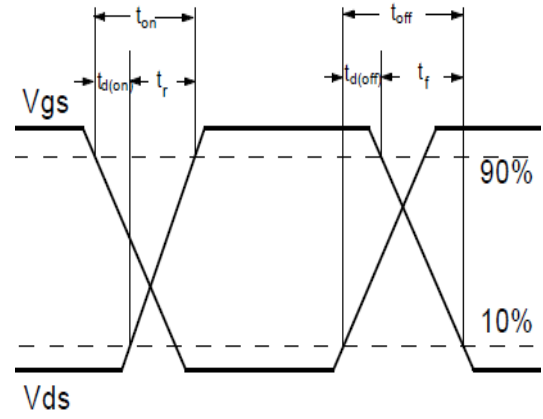


Fig.2-1 Gate charge test circuit

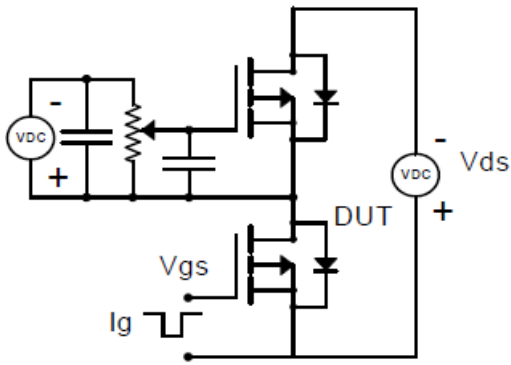
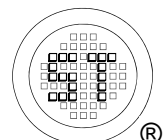
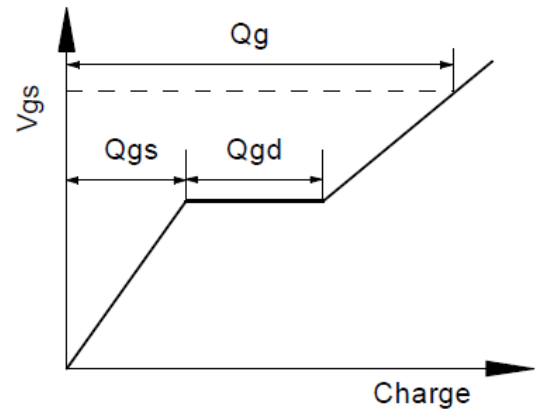


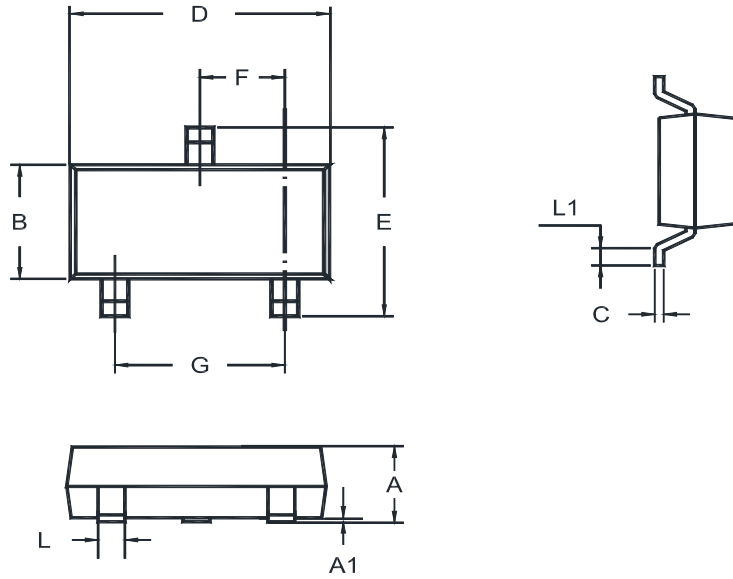
Fig.2-2 Gate charge waveform



MMFTP2307A

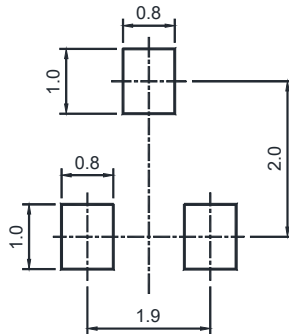
Package Outline (Dimensions in mm)

SOT-23



Unit	A	A1	B	C	D	E	F	G	L	L1
mm	1.20	0.100	1.40	0.19	3.04	2.6	1.02	2.04	0.51	0.2
	0.89	0.013	1.20	0.08	2.80	2.2	0.89	1.78	0.37	MIN

Recommended Soldering Footprint



Packing information

Package	Tape Width (mm)	Pitch		Reel Size		Per Reel Packing Quantity
		mm	inch	mm	inch	
SOT-23	8	4 ± 0.1	0.157 ± 0.004	178	7	3,000

Marking information

- " UN " = Part No.
- "YM" = Date Code Marking
- "Y" = Year
- "M" = Month
- Font type: Arial

