

MMFTN127

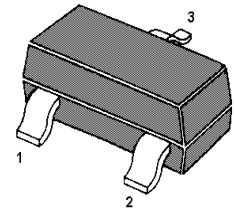
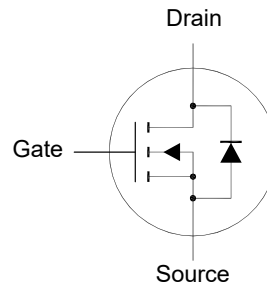
N-Channel Enhancement Mode MOSFET

Features

- Advanced trench cell design

Application

- AC-DC switching power supply
- DC-DC converters
- High-voltage H-bridge PWM motor drive



1. Gate 2. Source 3. Drain
SOT-23 Plastic Package

Absolute Maximum Ratings(at $T_a = 25^\circ\text{C}$ unless otherwise specified)

Parameter	Symbol	Value	Unit
Drain-Source Voltage	V_{DS}	600	V
Gate-Source Voltage	V_{GS}	± 20	V
Drain Current	I_D	100	mA
Peak Drain Current, Pulsed ¹⁾	I_{DM}	500	mA
Power Dissipation	P_D	0.61 ²⁾ 1.25 ³⁾	W
Operating Junction and Storage Temperature Range	T_J, T_{stg}	- 55 to + 150	$^\circ\text{C}$

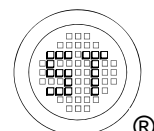
Thermal Resistance Ratings

Parameter	Symbol	Max.	Unit
Thermal Resistance from Junction to Ambient	$R_{\theta JA}$	204 ²⁾ 100 ³⁾	$^\circ\text{C/W}$

¹⁾ Pulse Test: Pulse Width $\leq 100 \mu\text{s}$, Duty Cycle $\leq 2\%$, Repetitive rating, pulse width limited by junction temperature $T_{J(\text{MAX})}$.

²⁾ Device mounted on FR-4 substrate PC board, 2oz copper, with minimum recommended pad layout.

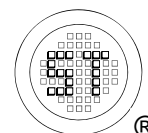
³⁾ Device mounted on FR-4 substrate PC board, 2oz copper, with 1-inch square copper plate in still air.



MMFTN127

Characteristics at $T_a = 25^\circ\text{C}$ unless otherwise specified

Parameter	Symbol	Min.	Typ.	Max.	Unit
STATIC PARAMETERS					
Drain-Source Breakdown Voltage at $I_D = 250 \mu\text{A}$	$V_{(BR)DSS}$	600	-	-	V
Zero Gate Voltage Drain Current at $V_{DS} = 600 \text{ V}$	I_{DSS}	-	-	100	nA
Gate-Source Leakage at $V_{GS} = \pm 20 \text{ V}$	I_{GSS}	-	-	± 100	nA
Gate-Source Threshold Voltage at $V_{DS} = V_{GS}$, $I_D = 250 \mu\text{A}$	$V_{GS(th)}$	2	-	4	V
Drain-Source On-State Resistance at $V_{GS} = 10 \text{ V}$, $I_D = 16 \text{ mA}$ at $V_{GS} = 5 \text{ V}$, $I_D = 16 \text{ mA}$	$R_{DS(on)}$	- -	- -	30 50	Ω
DYNAMIC PARAMETERS					
Forward Transfer Admittance at $V_{DS} = 10 \text{ V}$, $I_D = 16 \text{ mA}$	g_{fs}	-	66	-	mS
Gate resistance at $V_{DS} = 0 \text{ V}$, $V_{GS} = 0 \text{ V}$, $f = 1 \text{ MHz}$	R_g	-	8	-	Ω
Input Capacitance at $V_{DS} = 25 \text{ V}$, $V_{GS} = 0 \text{ V}$, $f = 1 \text{ MHz}$	C_{iss}	-	47	-	pF
Output Capacitance at $V_{DS} = 25 \text{ V}$, $V_{GS} = 0 \text{ V}$, $f = 1 \text{ MHz}$	C_{oss}	-	12	-	pF
Reverse Transfer Capacitance at $V_{DS} = 25 \text{ V}$, $V_{GS} = 0 \text{ V}$, $f = 1 \text{ MHz}$	C_{rss}	-	5	-	pF
Gate charge total at $V_{DS} = 520 \text{ V}$, $I_D = 0.3 \text{ A}$, $V_{GS} = 10 \text{ V}$	Q_g	-	4	-	nC
Gate to Source Charge at $V_{DS} = 520 \text{ V}$, $I_D = 0.3 \text{ A}$, $V_{GS} = 10 \text{ V}$	Q_{gs}	-	0.96	-	nC
Gate to Drain Charge at $V_{DS} = 520 \text{ V}$, $I_D = 0.3 \text{ A}$, $V_{GS} = 10 \text{ V}$	Q_{gd}	-	2.2	-	nC
Turn-On Delay Time at $V_{DD} = 300 \text{ V}$, $I_D = 0.3 \text{ A}$, $V_{GS} = 10 \text{ V}$, $R_g = 6 \Omega$	$t_{d(on)}$	-	5	-	ns
Turn-On Rise Time at $V_{DD} = 300 \text{ V}$, $I_D = 0.3 \text{ A}$, $V_{GS} = 10 \text{ V}$, $R_g = 6 \Omega$	t_r	-	44.5	-	ns
Turn-Off Delay Time at $V_{DD} = 300 \text{ V}$, $I_D = 0.3 \text{ A}$, $V_{GS} = 10 \text{ V}$, $R_g = 6 \Omega$	$t_{d(off)}$	-	11	-	ns
Turn-Off Fall Time at $V_{DD} = 300 \text{ V}$, $I_D = 0.3 \text{ A}$, $V_{GS} = 10 \text{ V}$, $R_g = 6 \Omega$	t_f	-	124	-	ns
Body-Diode PARAMETERS					
Drain-Source Diode Forward Voltage at $I_S = 16 \text{ mA}$	V_{SD}	-	-	1.5	V
Body-Diode Continuous Current	I_S	-	-	100	mA



Electrical Characteristics Curves

Fig. 1 Typical Output Characteristics

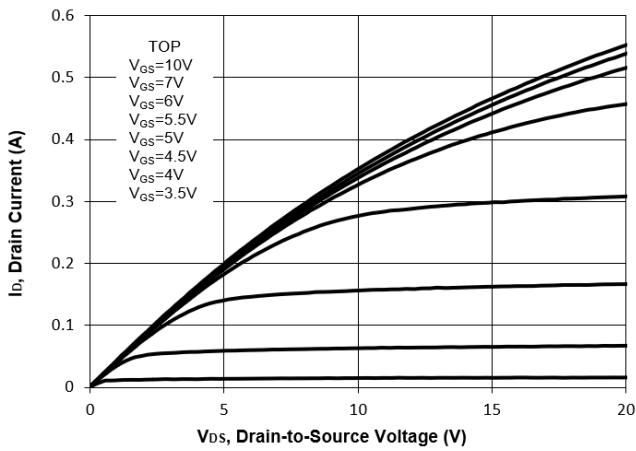


Fig. 2 Typical Transfer Characteristics

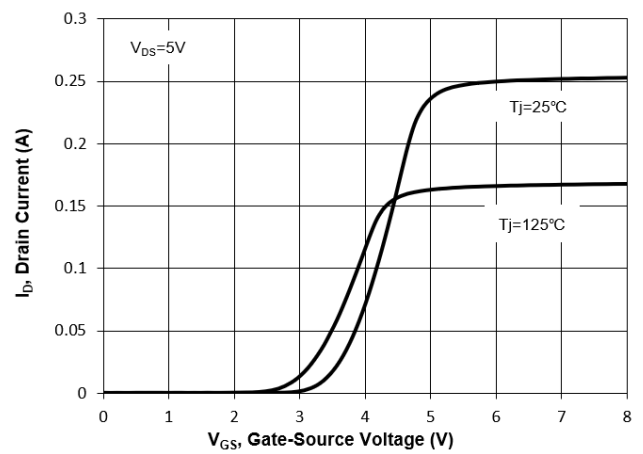


Fig. 3 on-Resistance vs. Drain Current

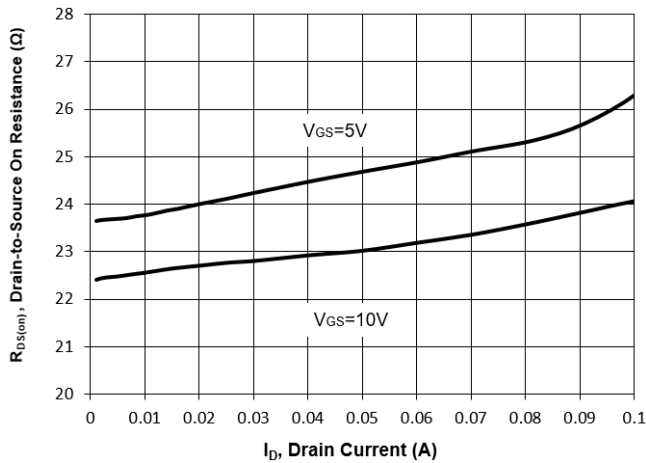


Fig. 4 on-Resistance vs. Gate Voltage

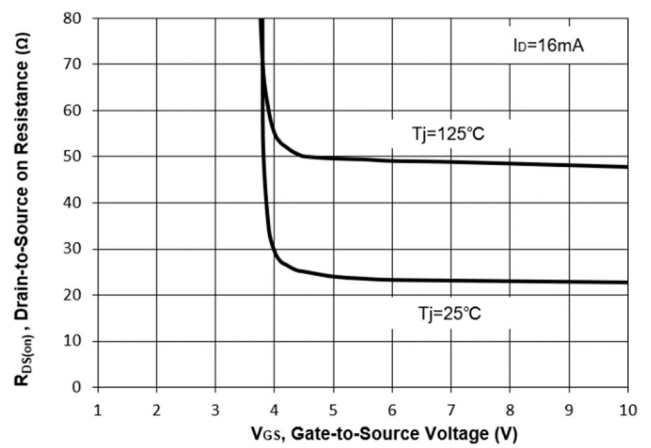


Fig. 5 on-Resistance vs. T_J

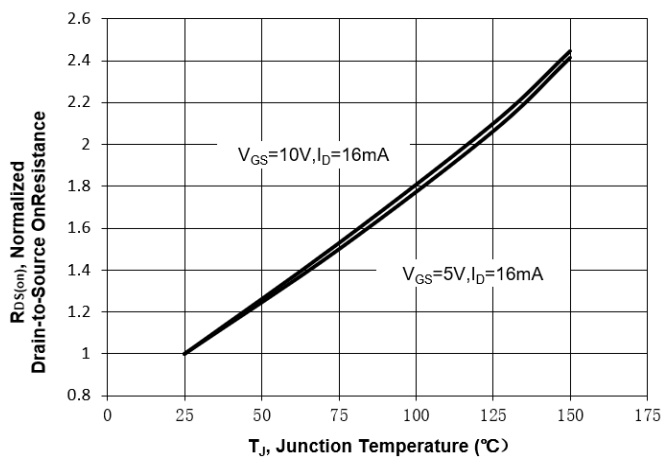
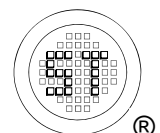
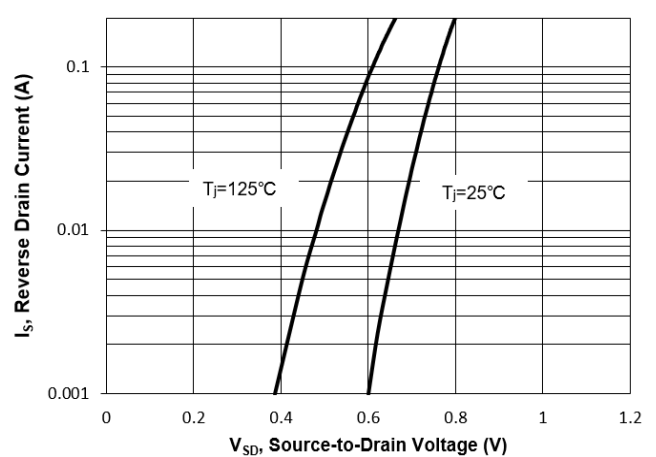


Fig. 6 Typical Forward Characteristics



Electrical Characteristics Curves

Fig. 7 Typical Junction Capacitance

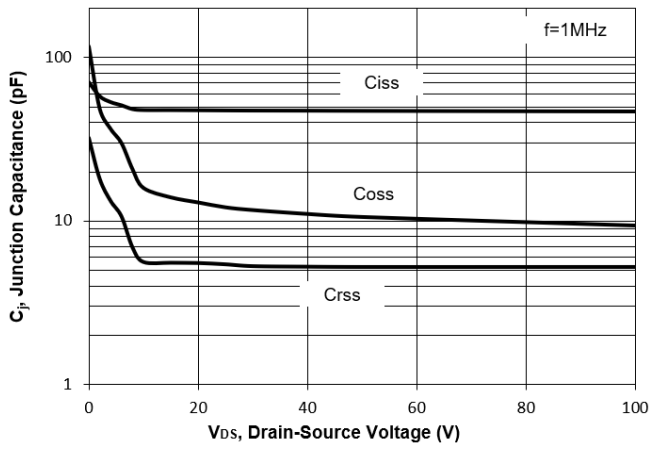


Fig. 8 Drain-Source Leakage Current vs. T_j

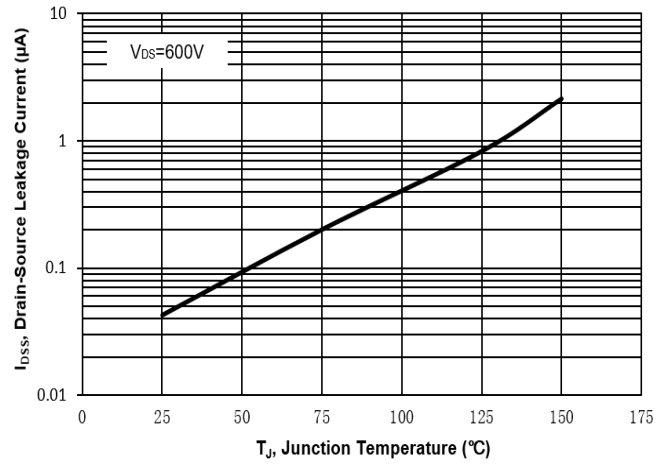


Fig. 9 $V_{(BR)DSS}$ vs. Junction Temperature

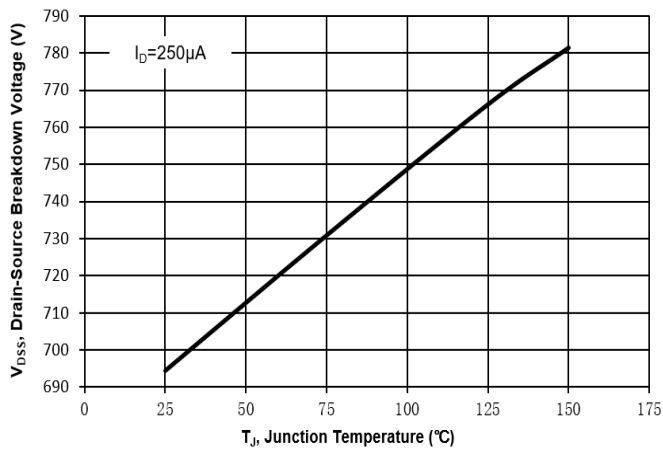


Fig. 10 Gate Threshold Variation vs. T_j

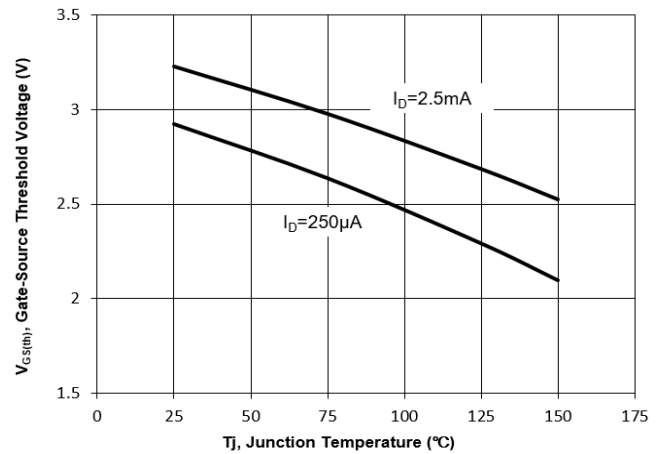
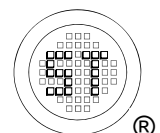
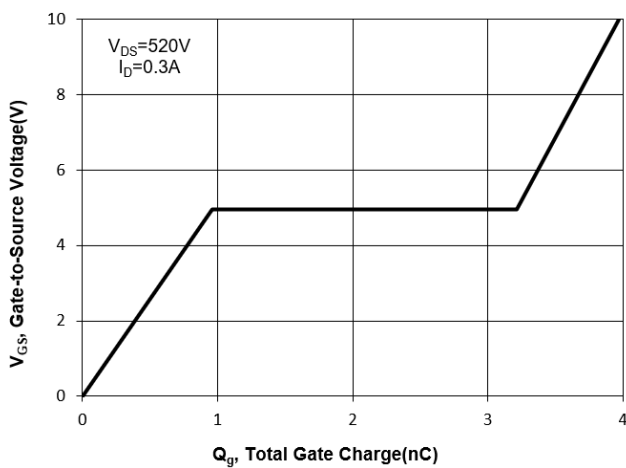


Fig. 11 Gate Charge



Test Circuits

Fig.1-1 Switching times test circuit

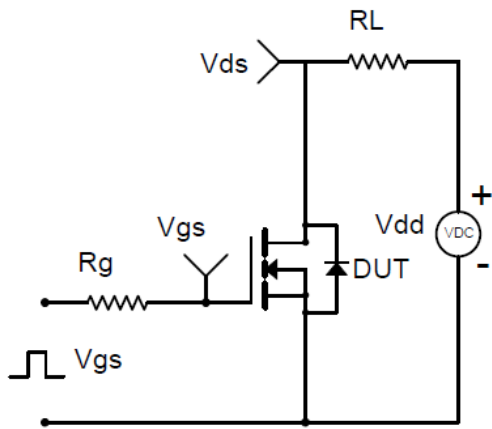


Fig.1-2 Switching Waveform

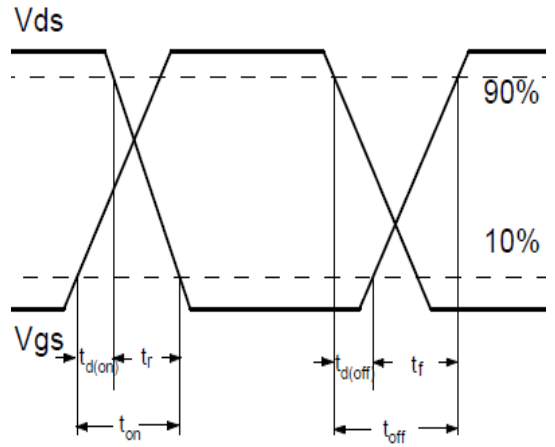


Fig.2-1 Gate charge test circuit

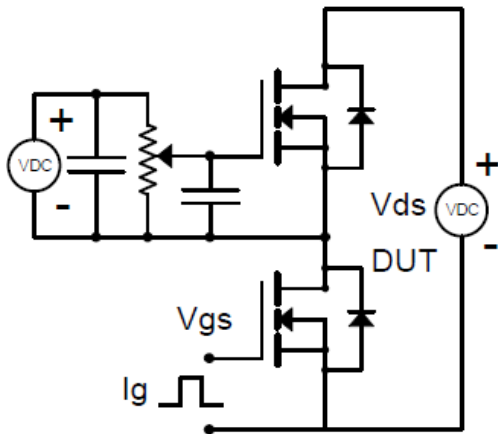
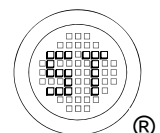
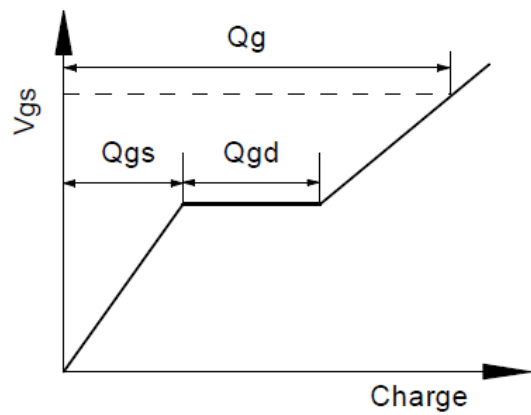


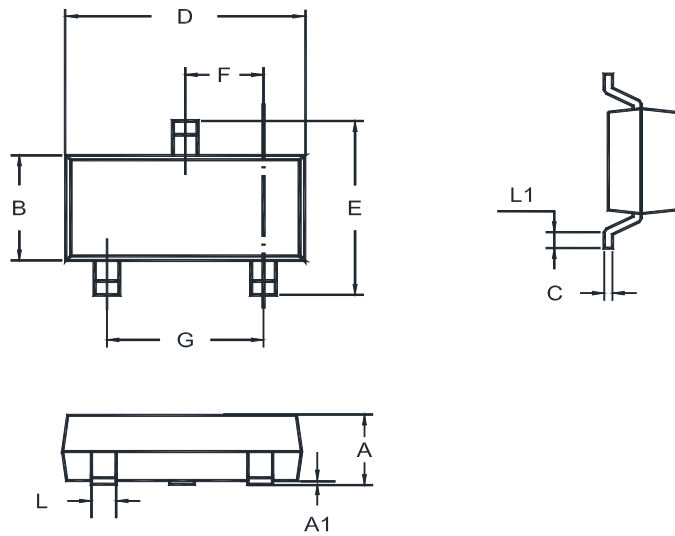
Fig.2-2 Gate charge waveform



MMFTN127

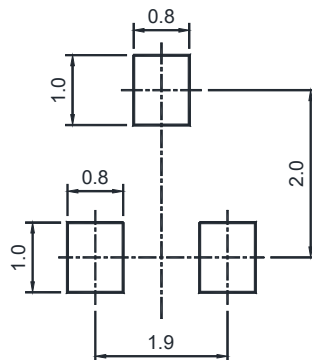
Package Outline (Dimensions in mm)

SOT-23



Unit	A	A1	B	C	D	E	F	G	L	L1
mm	1.20	0.100	1.40	0.19	3.04	2.6	1.02	2.04	0.51	0.2
	0.89	0.013	1.20	0.08	2.80	2.2	0.89	1.78	0.37	MIN

Recommended Soldering Footprint



Packing information

Package	Tape Width (mm)	Pitch		Reel Size		Per Reel Packing Quantity
		mm	inch	mm	inch	
SOT-23	8	4 ± 0.1	0.157 ± 0.004	178	7	3,000

Marking information

- " VX " = Part No.
 - " YM " = Date Code Marking
 - " Y " = Year
 - " M " = Month
- Font type: Arial

