

ESDU1201WT

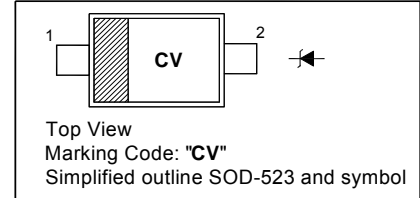
ESD Protection Diode

Features

- Protects one I/O or power line
- Low leakage current
- Low clamping voltage

PINNING

PIN	DESCRIPTION
1	Cathode
2	Anode



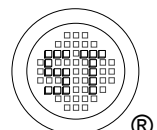
Absolute Maximum Ratings ($T_a = 25^\circ\text{C}$)

Parameter	Symbol	Value	Unit
Peak Pulse Power ($t_p = 8/20 \mu\text{s}$)	P_{PK}	200	W
Peak Pulse Current ($t_p = 8/20 \mu\text{s}$)	I_{PP}	8	A
(IEC61000-4-2) ESD Air Contact	V_{ESD}	± 20 ± 15	KV
Operation Temperature Range	T_j	- 55 to + 125	$^\circ\text{C}$
Storage Temperature Range	T_{stg}	- 55 to + 150	$^\circ\text{C}$

Characteristics at $T_a = 25^\circ\text{C}$

Parameter	Symbol	Min.	Typ.	Max.	Unit
Reverse Stand-Off Voltage	V_{RWM}	-	-	12	V
Reverse Breakdown Voltage at $I_R = 1 \text{ mA}$	$V_{(BR)R}$	13.3	-	-	V
Reverse Current at $V_{RWM} = 12 \text{ V}$	I_R	-	-	1	μA
Forward Voltage at $I_F = 10 \text{ mA}$	V_F	-	0.8	1	V
Clamping Voltage at $I_{PP} = 1 \text{ A}$, $t_p = 8/20 \mu\text{s}$ at $I_{PP} = 8 \text{ A}$, $t_p = 8/20 \mu\text{s}$	V_C	-	-	19 25	V
ESD Clamping Voltage at $I_{TLP} = 4 \text{ A}$, $t_p = 0.2/100 \text{ ns}$ at $I_{TLP} = 16 \text{ A}$, $t_p = 0.2/100 \text{ ns}$	V_{CL}	-	14.4 14.6	-	V
Junction Capacitance at $V_R = 0 \text{ V}$, $f = 1 \text{ MHz}$	C_j	-	-	60	pF
Dynamic Resistance ¹⁾	R_{dyn}	-	0.02	-	Ω

¹⁾ Dynamic Resistance calculated from $I_{TLP} = 4 \text{ A}$ to $I_{TLP} = 16 \text{ A}$.



Electrical Characteristics Curves

Fig 1. Pulse Waveform

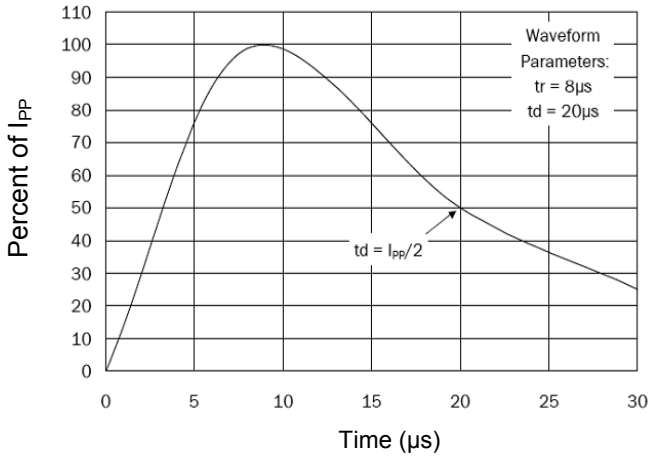


Fig 2. Power Derating Curve

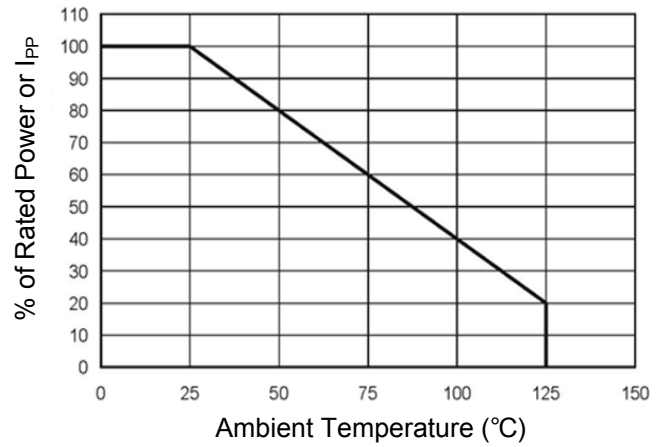


Fig 3. Clamping Voltage Curve

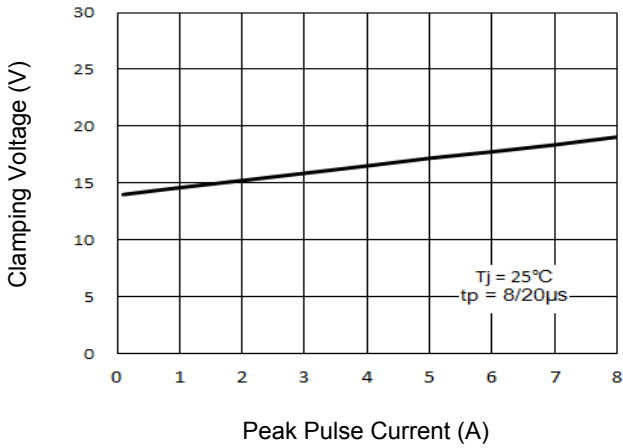


Fig 4. Junction Capacitance

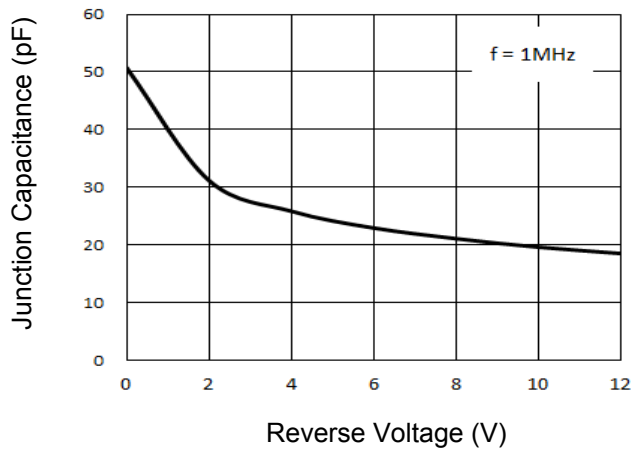
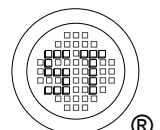
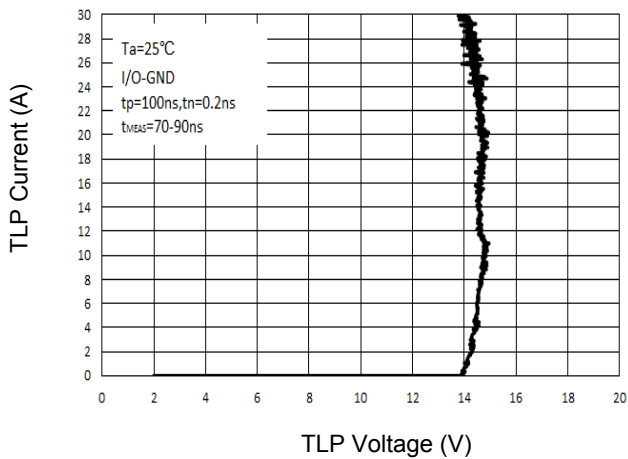


Fig 5. TLP Curve

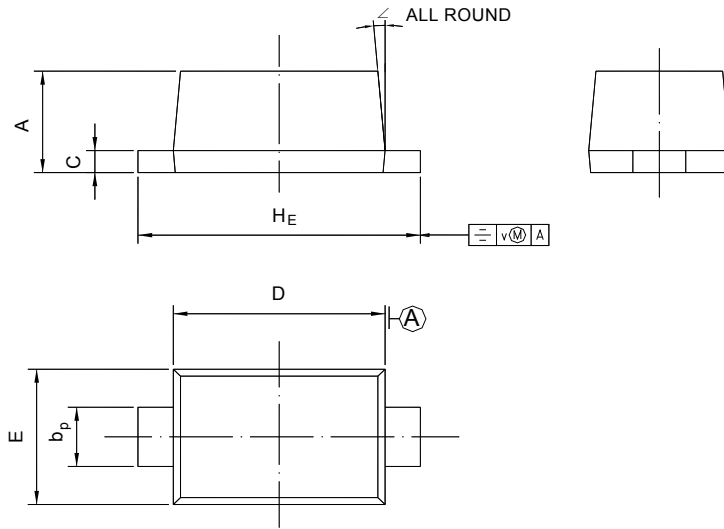


ESDU1201WT

PACKAGE OUTLINE

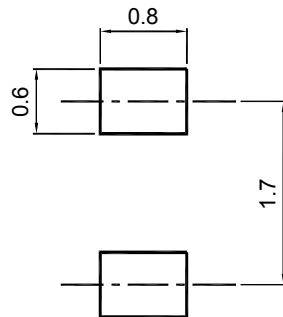
Plastic surface mounted package; 2 leads

SOD-523



UNIT	A	b _p	C	D	E	H _E	V	∠
mm	0.70 0.60	0.4 0.3	0.135 0.100	1.25 1.15	0.85 0.75	1.7 1.5	0.1	5°

Recommended Soldering Footprint



Packing information

Package	Tape Width (mm)	Pitch		Reel Size		Per Reel Packing Quantity
		mm	inch	mm	inch	
SOD-523	8	4 ± 0.1	0.157 ± 0.004	178	7	4,000

Marking information

" III " = Cathode line

" CV " = Part No.

Font type: Arial

