

# ESDBL5V0WT

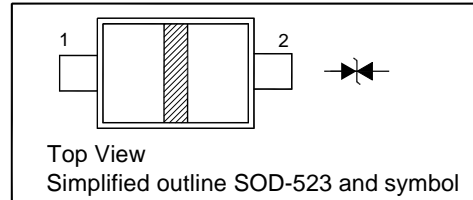
## Transient Voltage Suppressors

### Features

- Low reverse current
- Bi-directional Low capacitance

### PINNING

PIN	DESCRIPTION
1	Anode
2	Anode



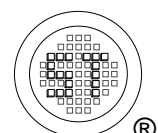
### Absolute Maximum Ratings ( $T_a = 25^\circ\text{C}$ )

Parameter	Symbol	Value	Unit
Reverse Working Voltage	$V_{RWM}$	5	V
ESD contact discharge (IEC61000-4-2) Contact	$V_{ESD}$	$\pm 25$	KV
Peak Pulse Current ( $t_p = 8/20 \mu\text{s}$ ) <sup>1)</sup>	$I_{PP}$	$\pm 2.5$	A
Operating Temperature Range	$T_j$	- 55 to + 125	$^\circ\text{C}$
Storage Temperature Range	$T_{stg}$	- 65 to + 150	$^\circ\text{C}$

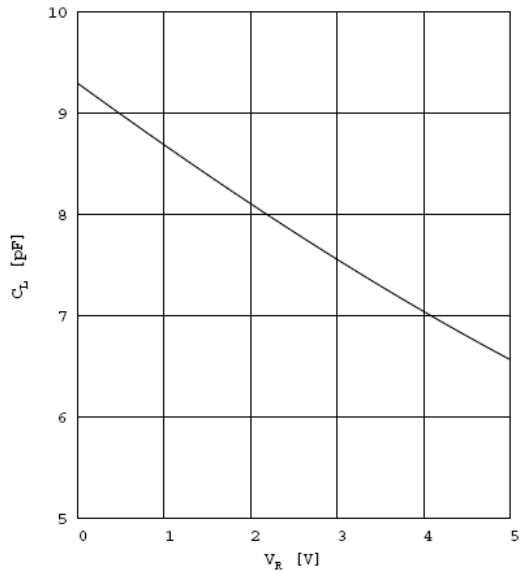
<sup>1)</sup>  $I_{PP}$  according to IEC61000-4-5

### Characteristics at $T_a = 25^\circ\text{C}$

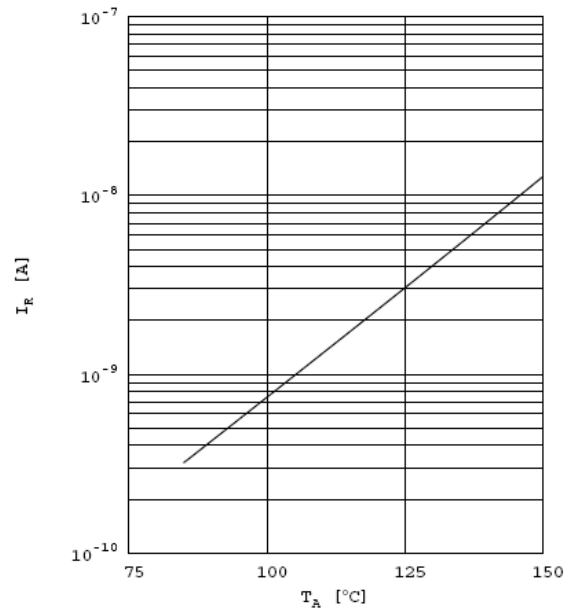
Parameter	Symbol	Min.	Typ.	Max.	Unit
Breakdown Voltage at $I_R = 1 \text{ mA}$	$V_{BR}$	7	-	-	V
Reverse Current at $V_R = 3 \text{ V}$	$I_R$	-	-	50	nA
Clamping Voltage at $I_{PP} = 5 \text{ A}$ , $t_p = 30 \text{ ns}$ , pin 1 - 2 at $I_{PP} = 5 \text{ A}$ , $t_p = 30 \text{ ns}$ , pin 2 - 1 at $I_{PP} = 16 \text{ A}$ , $t_p = 30 \text{ ns}$ , pin 1 - 2 at $I_{PP} = 16 \text{ A}$ , $t_p = 30 \text{ ns}$ , pin 2 - 1	$V_C$	-	17 20 22 25	-	V
Diode Capacitance at $V_R = 0 \text{ V}$ , $f = 1 \text{ MHz}$	$C_D$	-	-	13	pF



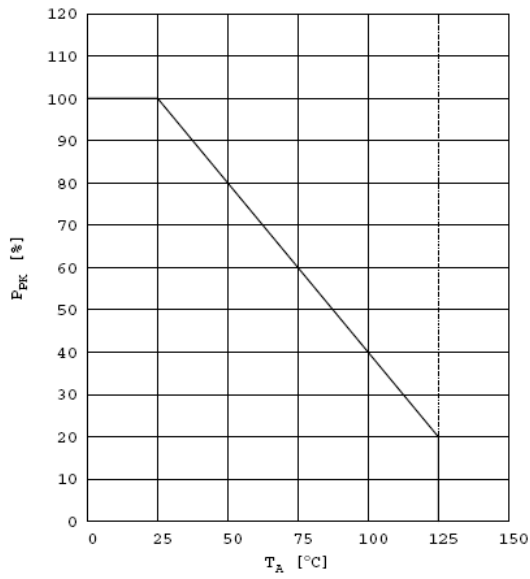
# ESDBL5V0WT



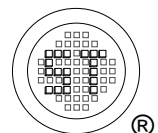
Capacitance characteristics:  $C_L = f(V_R)$



Reverse characteristics:  $I_R = f(T_A)$



Power derating curve:  $P_{PK} = f(T_A)$

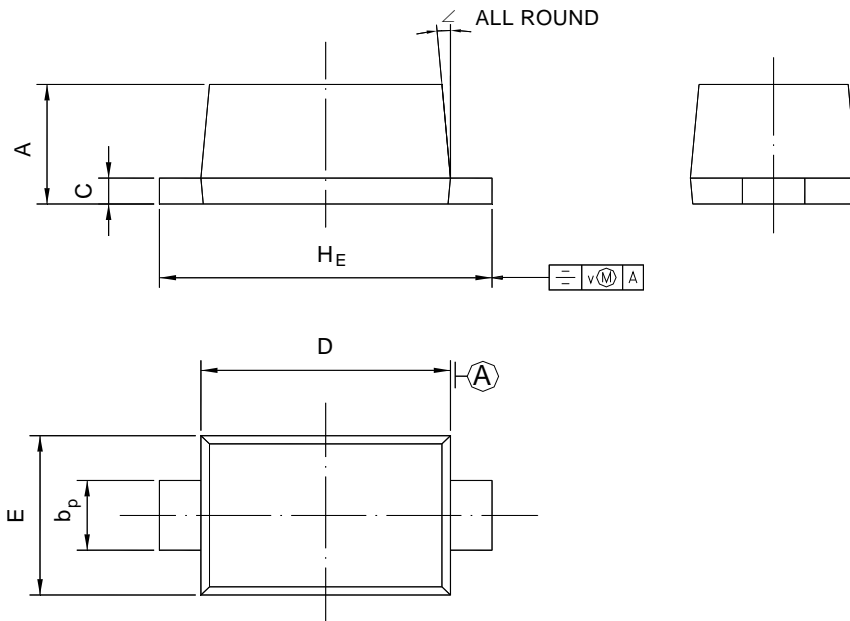


# ESDBL5V0WT

## PACKAGE OUTLINE

Plastic surface mounted package; 2 leads

SOD-523



UNIT	A	b <sub>p</sub>	C	D	E	H <sub>E</sub>	V	∠
mm	0.70 0.60	0.4 0.3	0.135 0.100	1.25 1.15	0.85 0.75	1.7 1.5	0.1	5°

