

ESD6V8WT

Transient Voltage Suppressors

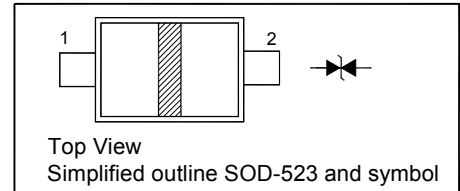
ESD Protection Diode

Features

- Ultra small mold type
- Bi-direction high reliability

PINNING

PIN	DESCRIPTION
1	Anode
2	Anode

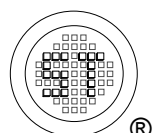


Absolute Maximum Ratings ($T_a = 25^\circ\text{C}$)

Parameter	Symbol	Value	Unit
Peak Pulse Power ($t_p = 10/1000 \mu\text{s}$)	P_{PK}	10	W
Power Dissipation	P_D	150	mW
ESD per IEC 61000-4-2 Air Contact	V_{ESD}	± 30	KV
Junction Temperature	T_J	150	$^\circ\text{C}$
Storage Temperature Range	T_{stg}	- 55 to + 150	$^\circ\text{C}$
Operation Temperature Range	T_{opr}	- 55 to + 150	$^\circ\text{C}$

Characteristics at $T_a = 25^\circ\text{C}$

Parameter	Symbol	Min.	Typ.	Max.	Unit
Zener Voltage at $I_Z = 1 \text{ mA}$	V_Z	5.78	-	7.82	V
Reverse Current at $V_R = 3.5 \text{ V}$	I_R	-	-	0.5	μA
Capacitance Between Terminals at $V_R = 0 \text{ V}$, $f = 1 \text{ MHz}$	C_T	-	20	-	pF



ESD6V8WT

Electrical Characteristic Curves

Fig 1. Pulse Waveform

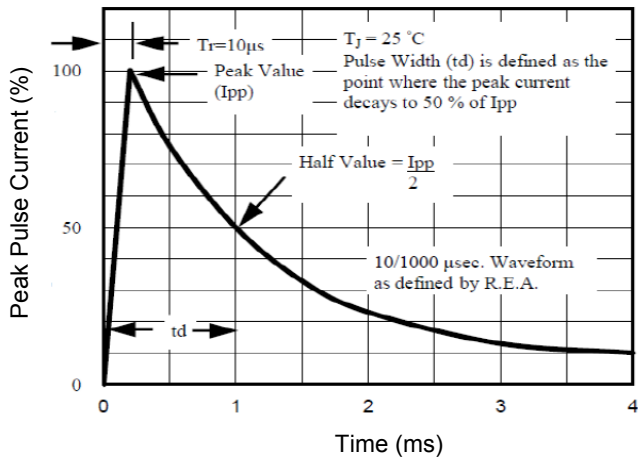


Fig 2. Junction Capacitance

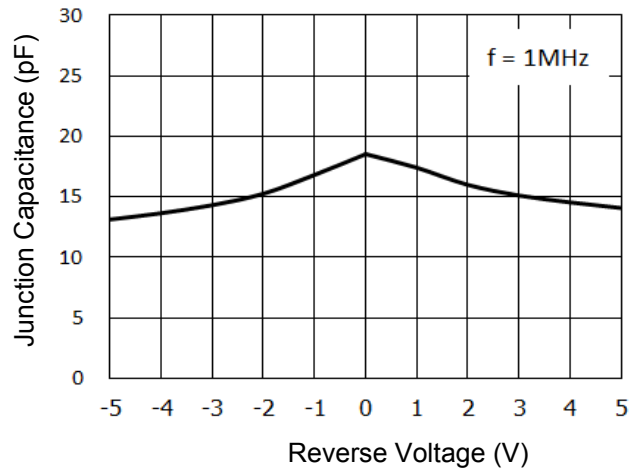


Fig 3 TLP Curve

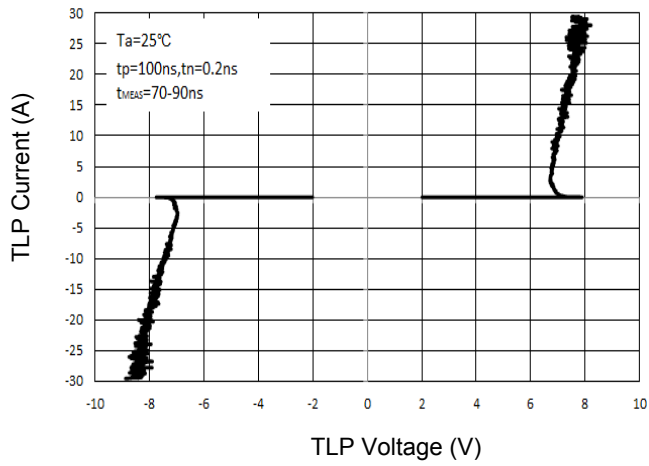
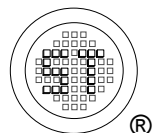
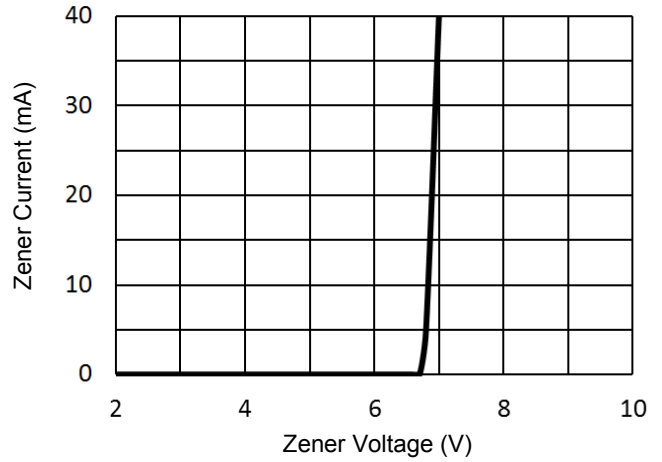


Fig 4. Zener Characteristics Curve

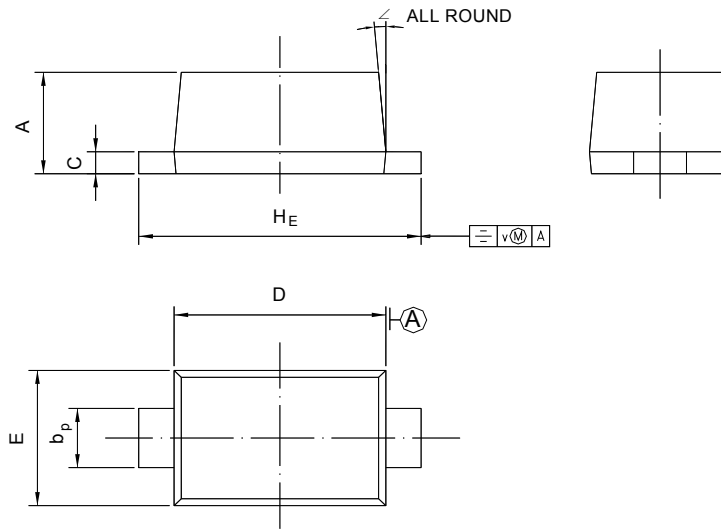


ESD6V8WT

PACKAGE OUTLINE

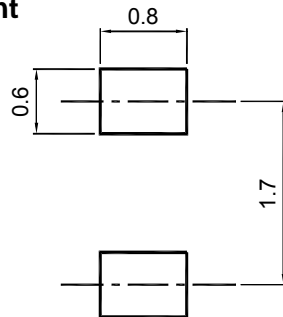
Plastic surface mounted package; 2 leads

SOD-523



UNIT	A	b_p	C	D	E	H_E	V	\angle
mm	0.70 0.60	0.4 0.3	0.135 0.100	1.25 1.15	0.85 0.75	1.7 1.5	0.1	5°

Recommended Soldering Footprint



Packing information

Package	Tape Width (mm)	Pitch		Reel Size		Per Reel Packing Quantity
		mm	inch	mm	inch	
SOD-523	8	4 ± 0.1	0.157 ± 0.004	178	7	4,000

Marking information

" III ": Polarity Marking

