

ESD2401WT

Transient Voltage Suppressors

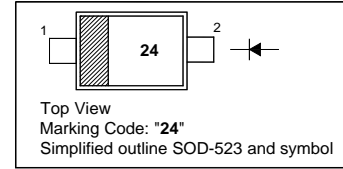
for ESD Protection

Features

- Protects one data line
- Low leakage current
- Low clamping voltage

PINNING

PIN	DESCRIPTION
1	Cathode
2	Anode

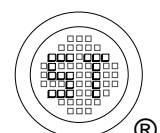


Absolute Maximum Ratings ($T_a = 25\text{ }^\circ\text{C}$)

Parameter	Symbol	Value	Unit
Reverse Stand-Off Voltage	V_R	24	V
Peak Pulse Current ($t_p = 8/20\ \mu\text{s}$)	I_{PP}	3	A
IEC61000-4-2 (ESD) Air Contact	V_{PP}	± 15 ± 8	KV
Peak Pulse Power ($t_p = 8/20\ \mu\text{s}$)	P_{PK}	150	W
Operation Temperature Range	T_j	- 55 to + 125	$^\circ\text{C}$
Storage Temperature Range	T_{stg}	- 55 to + 150	$^\circ\text{C}$

Characteristics at $T_a = 25\text{ }^\circ\text{C}$

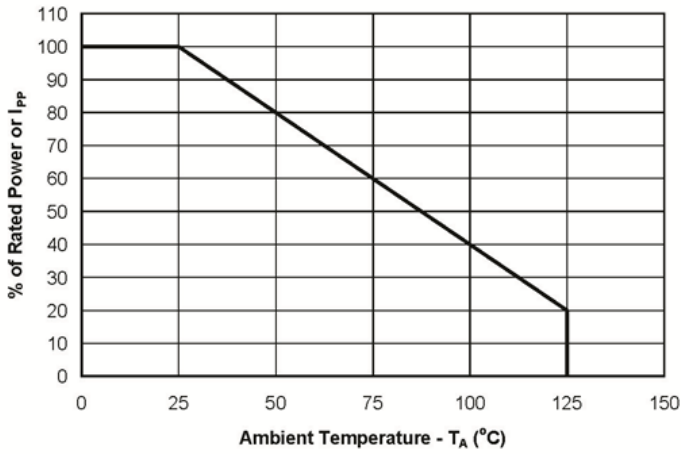
Parameter	Symbol	Min.	Max.	Unit
Reverse Stand-Off Voltage	V_{RWM}	-	24	V
Reverse Breakdown Voltage at $I_R = 1\ \text{mA}$	$V_{(BR)R}$	26.5	27.5	V
Forward Voltage at $I_F = 10\ \text{mA}$	V_F	-	1.2	V
Reverse Current at $V_{RWM} = 24\ \text{V}$	I_R	-	50	nA
Clamping Voltage at $I_{PP} = 1\ \text{A}$, $t_p = 8/20\ \mu\text{s}$ at $I_{PP} = 3\ \text{A}$, $t_p = 8/20\ \mu\text{s}$	V_C	-	36 50	V
Junction Capacitance at $V_R = 0\ \text{V}$, $f = 1\ \text{MHz}$	C_j	-	65	pF



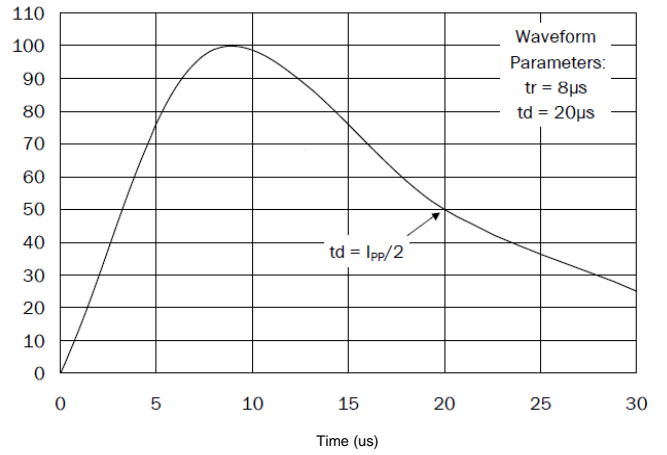
ESD2401WT

Electrical Characteristics Curves

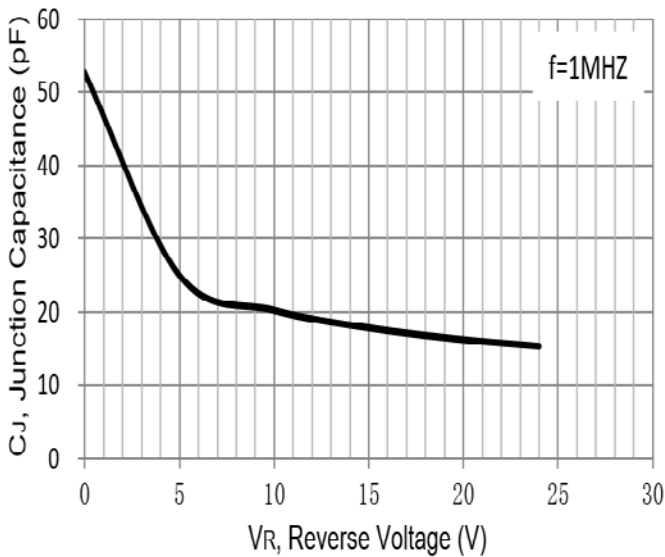
Power Derating Curve



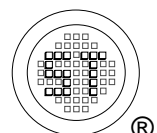
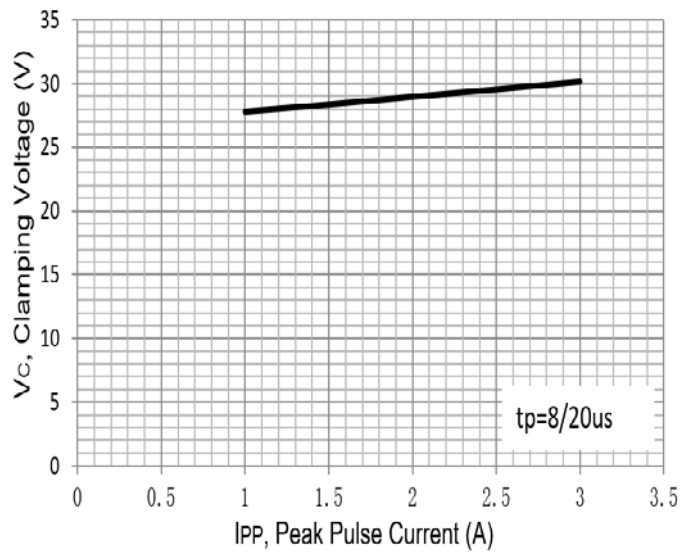
Pulse Waveform



Junction Capacitance vs Reverse Voltage



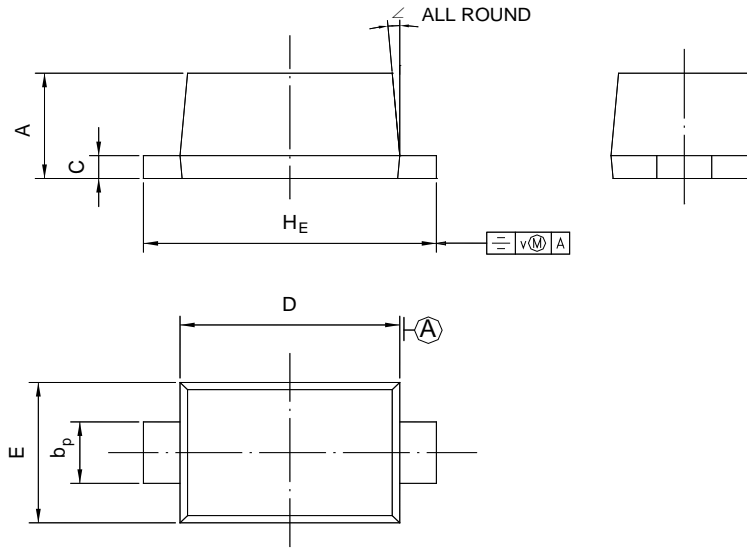
Clamping Voltage vs Peak Pulse Current



ESD2401WT

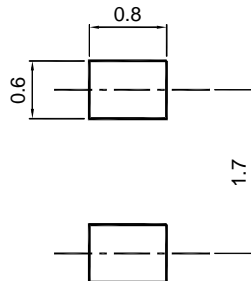
PACKAGE OUTLINE Plastic surface mounted package; 2 leads

SOD-523



UNIT	A	b _p	C	D	E	H _E	V	∠
mm	0.70 0.60	0.4 0.3	0.135 0.100	1.25 1.15	0.85 0.75	1.7 1.5	0.1	5°

Recommended Soldering Footprint



Packing information

Package	Tape Width (mm)	Pitch		Reel Size		Per Reel Packing Quantity
		mm	(inch)	mm	(inch)	
SOD-523	8	4 ± 0.1	0.157 ± 0.004	178	7	4,000

Marking information

" 24 " = Part No
 " III " = Cathode line
 Font type: Arial

