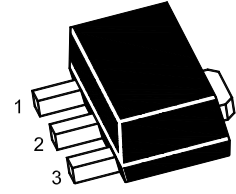


# BCX55U

## NPN Silicon Epitaxial Planar Transistor



1.Base 2.Collector 3.Emitter  
SOT-89 Plastic Package

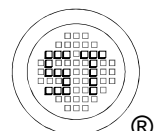
### Absolute Maximum Ratings ( $T_a = 25^\circ\text{C}$ )

Parameter	Symbol	Value	Unit
Collector Base Voltage	$V_{CB0}$	60	V
Collector Emitter Voltage	$V_{CE0}$	60	V
Emitter Base Voltage	$V_{EB0}$	5	V
Collector Current	$I_C$	1	A
Total Power Dissipation	$P_{tot}$	0.5	W
Junction Temperature	$T_j$	150	$^\circ\text{C}$
Storage Temperature Range	$T_{stg}$	- 55 to + 150	$^\circ\text{C}$

### Thermal Characteristics

Parameter	Symbol	Max.	Unit
Thermal Resistance from Junction Ambient <sup>1)</sup>	$R_{\theta JA}$	250	$^\circ\text{C}/\text{W}$

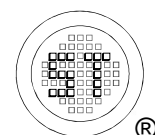
<sup>1)</sup> Device mounted on FR-4 substrate PC board, 2oz copper, with minimum recommended pad layout.



# BCX55U

## Characteristics at $T_a = 25^\circ\text{C}$

Parameter	Symbol	Min.	Typ.	Max.	Unit
DC Current Gain at $V_{CE} = 2\text{ V}$ , $I_C = 5\text{ mA}$ at $V_{CE} = 2\text{ V}$ , $I_C = 150\text{ mA}$ at $V_{CE} = 2\text{ V}$ , $I_C = 500\text{ mA}$	$h_{FE}$	40	-	-	-
	BCX55-10U $h_{FE}$	63	-	160	-
	BCX55-16U $h_{FE}$	100	-	250	-
	$h_{FE}$	25	-	-	-
Collector Base Cutoff Current at $V_{CB} = 30\text{ V}$	$I_{CBO}$	-	-	100	nA
Emitter Base Cutoff Current at $V_{EB} = 5\text{ V}$	$I_{EBO}$	-	-	100	nA
Collector Base Breakdown Voltage at $I_C = 100\text{ }\mu\text{A}$	$V_{(BR)CBO}$	60	-	-	V
Collector Emitter Breakdown Voltage at $I_C = 10\text{ mA}$	$V_{(BR)CEO}$	60	-	-	V
Emitter Base Breakdown Voltage at $I_E = 100\text{ }\mu\text{A}$	$V_{(BR)EBO}$	5	-	-	V
Collector Emitter Saturation Voltage at $I_C = 500\text{ mA}$ , $I_B = 50\text{ mA}$	$V_{CE(sat)}$	-	-	0.5	V
Base Emitter Turn-On Voltage at $V_{CE} = 2\text{ V}$ , $I_C = 500\text{ mA}$	$V_{BE(on)}$	-	-	1	V
Transition Frequency at $V_{CE} = 5\text{ V}$ , $I_C = 50\text{ mA}$ , $f = 100\text{ MHz}$	$f_T$	100	-	-	MHz
Collector Output Capacitance at $V_{CB} = 10\text{ V}$ , $f = 1\text{ MHz}$	$C_{ob}$	-	6	-	pF



# BCX55U

## Electrical Characteristics Curves

Fig. 1 Output Characteristics Curve

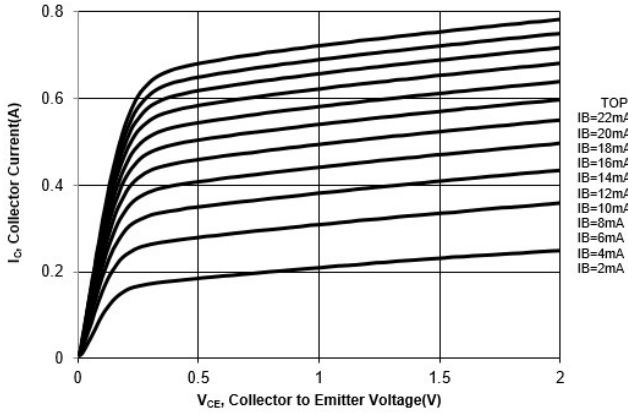


Fig. 2 Collector Current vs. Base to Emitter Voltage

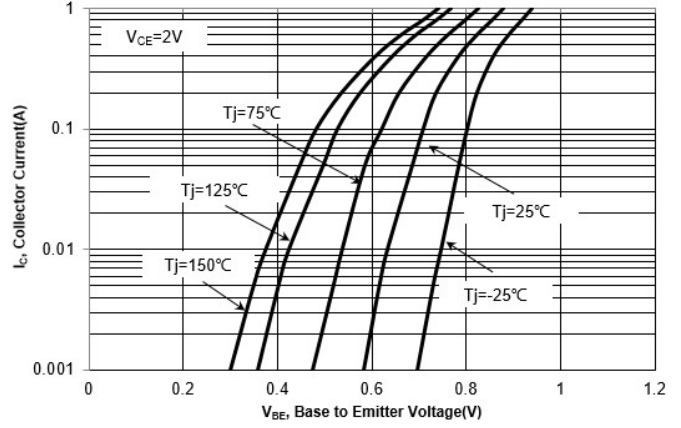


Fig. 3 DC Current Gain vs. Collector Current

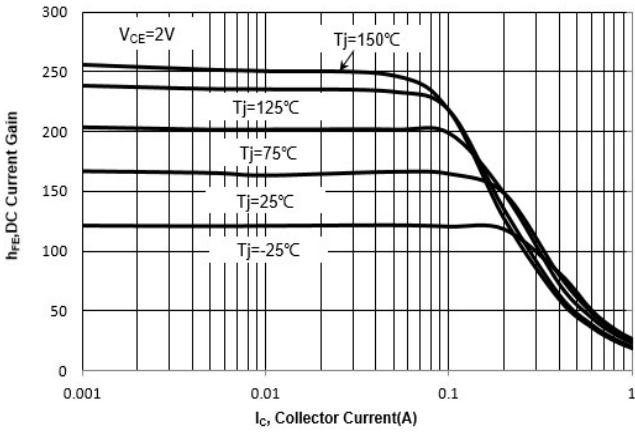
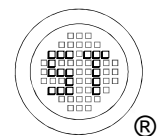
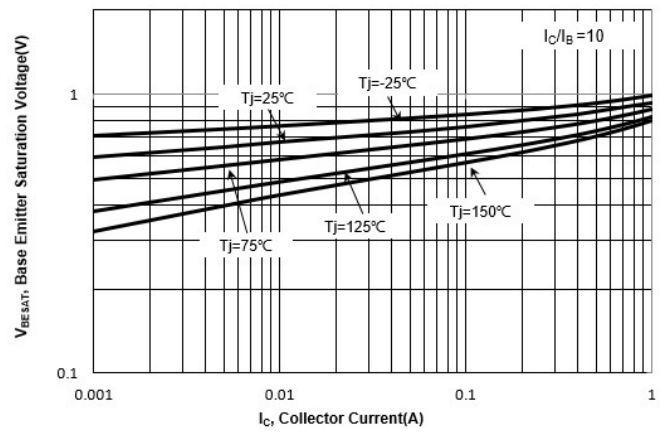


Fig. 4  $V_{BESAT}$  vs. Collector Current



# BCX55U

## Electrical Characteristics Curves

Fig. 5  $V_{CESAT}$  vs. Collector Current

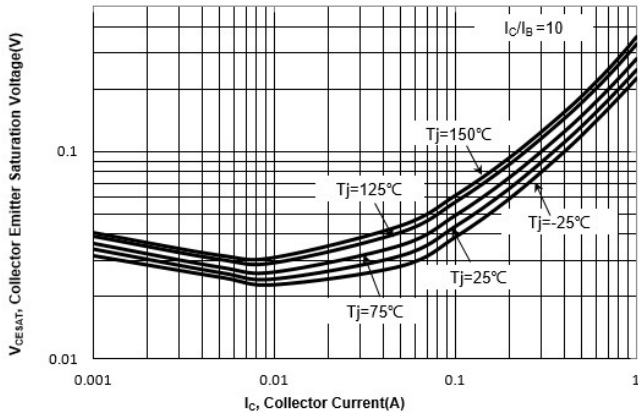


Fig. 6 Output Capacitance

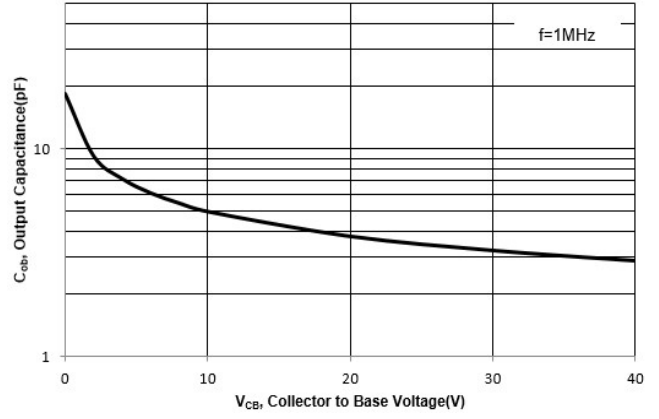
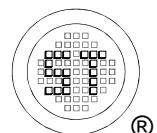
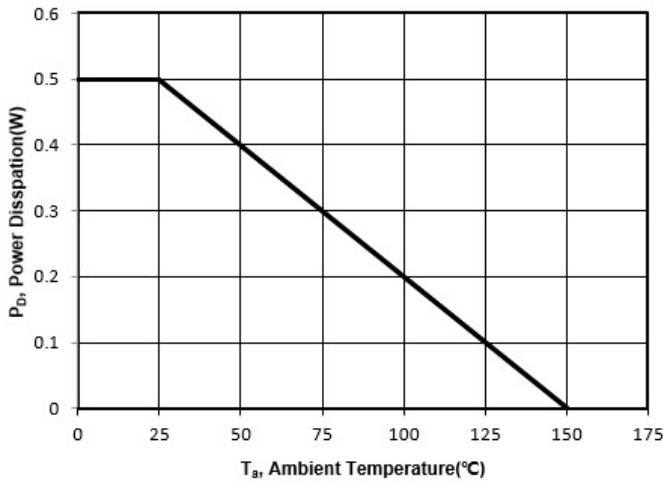


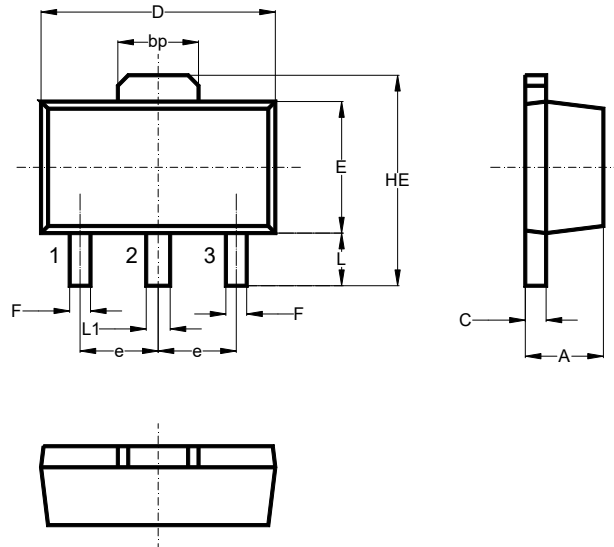
Fig. 7 Power Derating Curve



# BCX55U

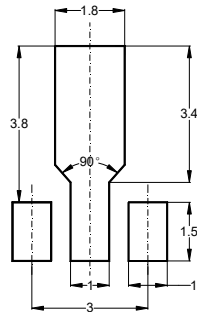
## Package Outline (Dimensions in mm)

## SOT-89



Unit	A	bp	C	D	E	F	HE	e	L	L1
mm	1.6	1.60	0.5	4.6	2.6	0.45	4.25	1.5	1.05	0.51
	1.4	1.50	0.3	4.4	2.4	0.35	3.75	typ.	0.95	0.41

## Recommended Soldering Footprint



## Packing information

Package	Tape Width (mm)	Pitch		Reel Size		Per Reel Packing Quantity
		mm	inch	mm	inch	
SOT-89	12	8 ± 0.1	0.315 ± 0.004	178	7	1,000
				330	13	4,000

## Marking information

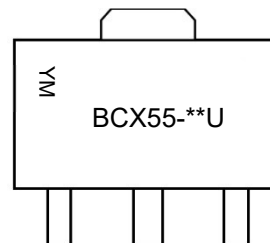
" BCX55-\*\*U " = Part No. (" \*\* " = HFE grouping Code)

"YM" = Date Code Marking

"Y" = Year

"M" = Month

Font type: Arial



Disclaimer: Our company reserve the right to make modifications, enhancements, improvements, corrections or other changes to improve product design, functions and reliability, anytime without notice. Semtech Electronics Limited makes no warranties, representations or warranties regarding the suitability of its products for any particular purpose, and does not accept any liability arising from the application or use of any product or circuit such as: Apply to medical, military, aircraft, space or life support equipment and expressly waive any and all liability, including but not limited to special, consequential or collateral damage.

