

BAT760WS

Schottky Barrier Rectifier

Features

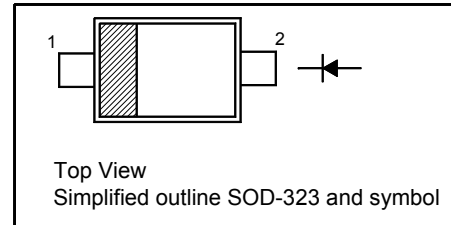
- Ultra high-speed switching
- Very low forward voltage
- Very small SMD plastic package

Applications

- Ultra high-speed switching
- Protection circuits

PINNING

PIN	DESCRIPTION
1	Cathode
2	Anode



Absolute Maximum Ratings ($T_a = 25^\circ\text{C}$ unless otherwise specified)

Parameter	Symbol	Value	Unit
Reverse Voltage	V_R	20	V
Continuous Forward Current	I_F	1	A
Peak Forward Surge Current 8.3 ms Single Half Sine-wave Superimposed on Rated Load (JEDEC Method)	I_{FSM}	5	A
Junction Temperature	T_J	125	$^\circ\text{C}$
Storage Temperature Range	T_{stg}	- 55 to + 150	$^\circ\text{C}$

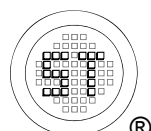
Thermal Characteristics

Parameter	Symbol	Max.	Unit
Thermal Resistance Junction to Ambient ¹⁾	$R_{\theta JA}$	426	$^\circ\text{C/W}$

¹⁾ Device mounted on FR-4 substrate PC board, 2oz copper, with minimum recommended pad layout.

Characteristics at $T_a = 25^\circ\text{C}$

Parameter	Symbol	Min.	Max.	Unit
Reverse Breakdown Voltage at $I_R = 100 \mu\text{A}$	$V_{(BR)R}$	20	-	V
Forward Voltage at $I_F = 10 \text{ mA}$ at $I_F = 100 \text{ mA}$ at $I_F = 1 \text{ A}$	V_F	- - -	0.27 0.36 0.65	V
Reverse Current at $V_R = 5 \text{ V}$ at $V_R = 8 \text{ V}$ at $V_R = 15 \text{ V}$	I_R	- - -	10 20 50	μA
Diode Capacitance at $V_R = 5 \text{ V}$, $f = 1 \text{ MHz}$	C_d	-	35	pF



BAT760WS

Electrical Characteristic Curves

Fig 1. Reverse Characteristics Curve

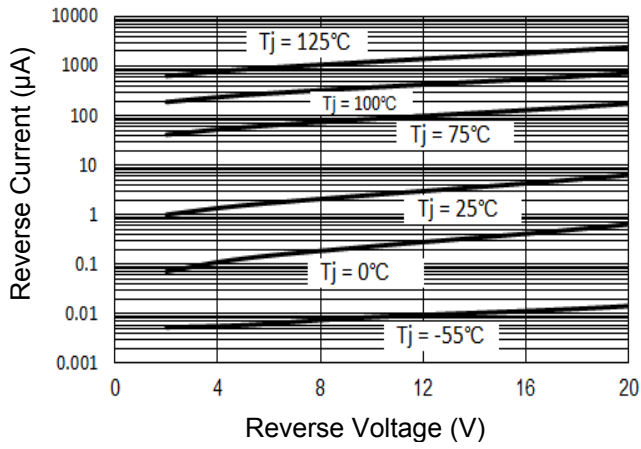


Fig 2. Forward Characteristics Curve

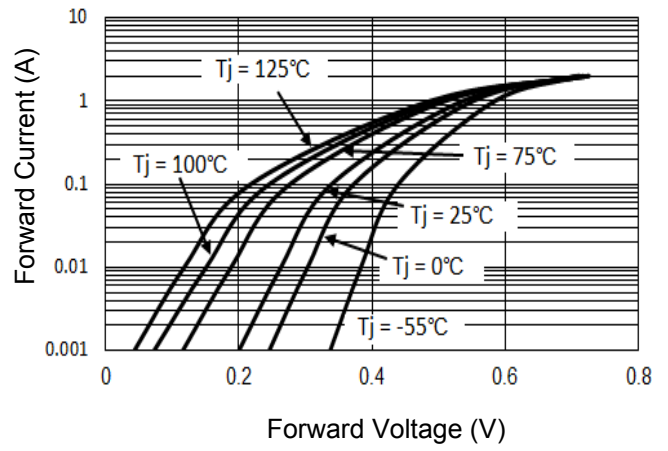


Fig 3. Junction Capacitance

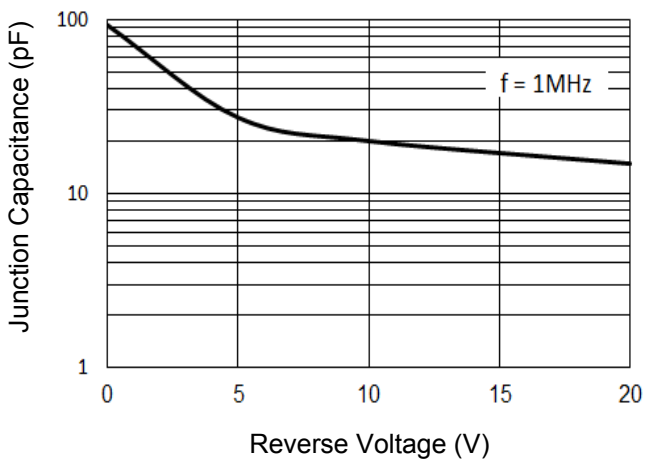
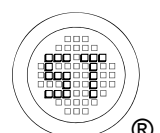
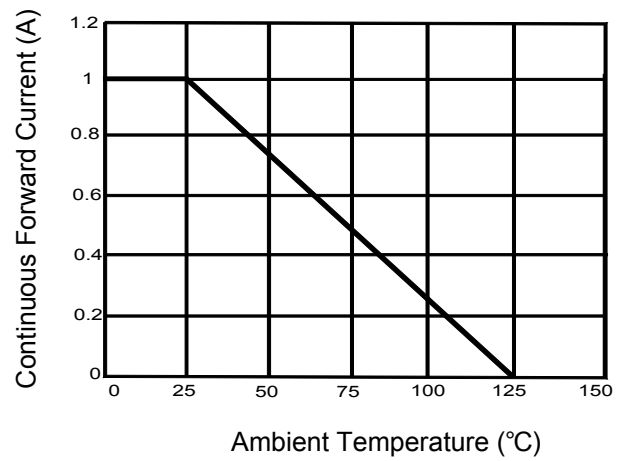


Fig 4. Forward Current Derating Curve

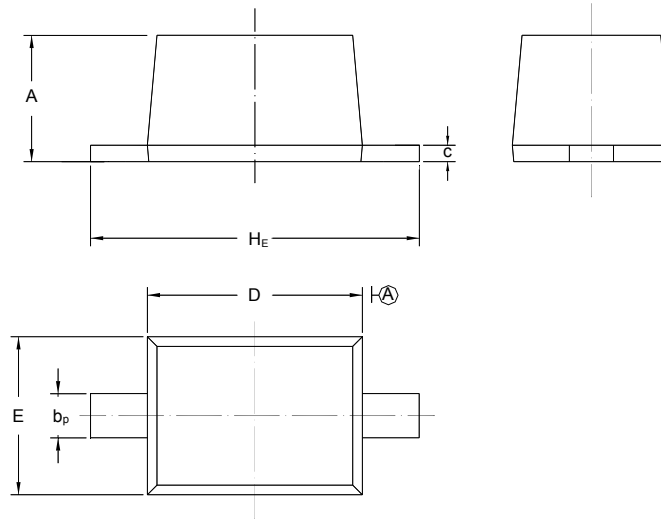


BAT760WS

PACKAGE OUTLINE

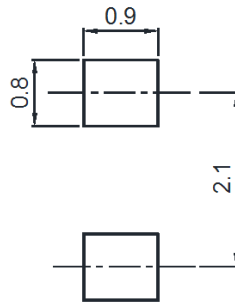
Plastic surface mounted package; 2 leads

SOD-323



UNIT	A	b _p	C	D	E	H _E
mm	1.10 0.80	0.40 0.25	0.15 0.10	1.80 1.60	1.35 1.15	2.80 2.30

Recommended Soldering Footprint



Packing information

Package	Tape Width (mm)	Pitch		Reel Size		Per Reel Packing Quantity
		mm	inch	mm	inch	
SOD-323	8	4 ± 0.1	0.157 ± 0.004	178	7	3,000

Marking information

"FP" = Part No.

"III" = Cathode line

Font type: Arial



Disclaimer: Our company reserve the right to make modifications, enhancements, improvements, corrections or other changes to improve product design, functions and reliability, anytime without notice. Semtech Electronics Limited makes no warranties, representations or warranties regarding the suitability of its products for any particular purpose, and does not accept any liability arising from the application or use of any product or circuit such as: Apply to medical, military, aircraft, space or life support equipment and expressly waive any and all liability, including but not limited to special, consequential or collateral damage.

