

BAT60WS

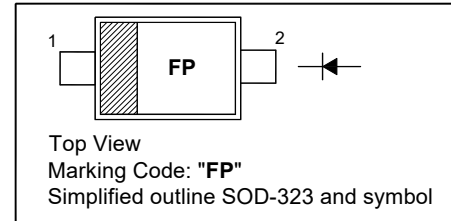
Schottky Barrier Diode

Features

- Ultra high-speed switching
- Very low forward voltage
- Very small SMD plastic package

PINNING

PIN	DESCRIPTION
1	Cathode
2	Anode

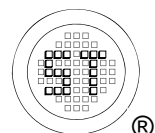


Absolute Maximum Ratings ($T_a = 25\text{ }^\circ\text{C}$)

Parameter	Symbol	Value	Unit
Reverse Voltage	V_R	10	V
Peak Forward Current	I_F	3	A
Non-repetitive Peak Forward Current ($t_p = 10\text{ ms}$)	I_{FSM}	5	A
Total Power Dissipation	P_{tot}	350	mW
Thermal Resistance from Junction to Ambient	$R_{\theta JA}$	286	$^\circ\text{C/W}$
Junction Temperature	T_J	125	$^\circ\text{C}$
Storage Temperature Range	T_{stg}	- 55 to + 150	$^\circ\text{C}$

Characteristics at $T_a = 25\text{ }^\circ\text{C}$

Parameter	Symbol	Typ.	Max.	Unit
Forward Voltage at $I_F = 10\text{ mA}$ at $I_F = 100\text{ mA}$ at $I_F = 500\text{ mA}$ at $I_F = 1\text{ A}$	V_F	- - - -	0.32 0.38 0.5 0.58	V
Reverse Current at $V_R = 5\text{ V}$ at $V_R = 8\text{ V}$	I_R	- -	3 4	μA
Total Capacitance at $V_R = 5\text{ V}$, $f = 1\text{ MHz}$	C_T	30	-	pF



BAT60WS

Electrical characteristic curves

Fig 1. Reverse Characteristic Curve

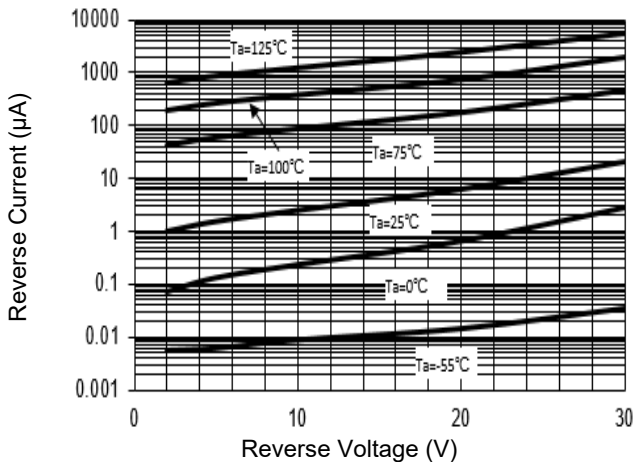


Fig 2. Forward Characteristic Curve

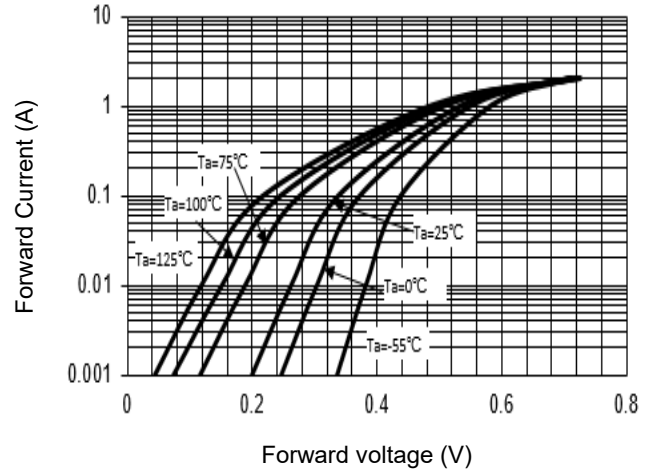


Fig 3. Junction Capacitance

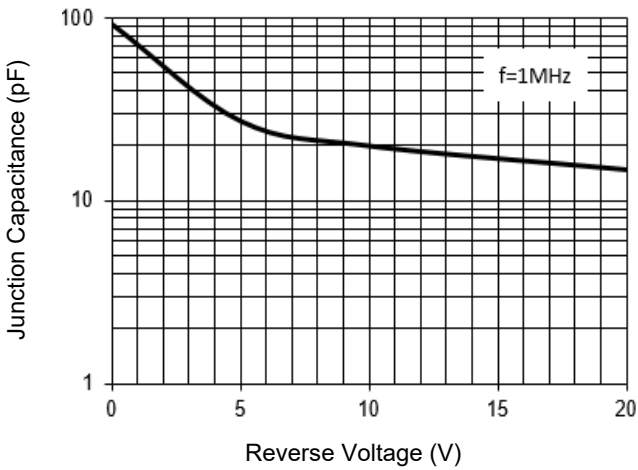
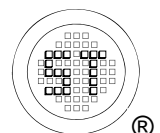
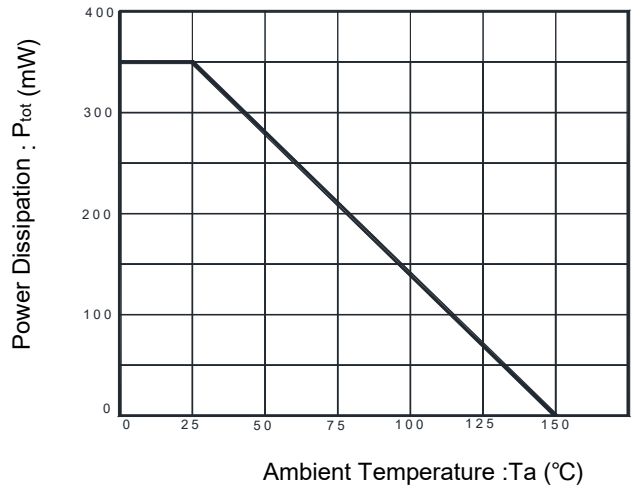


Fig 4. Derating Curve

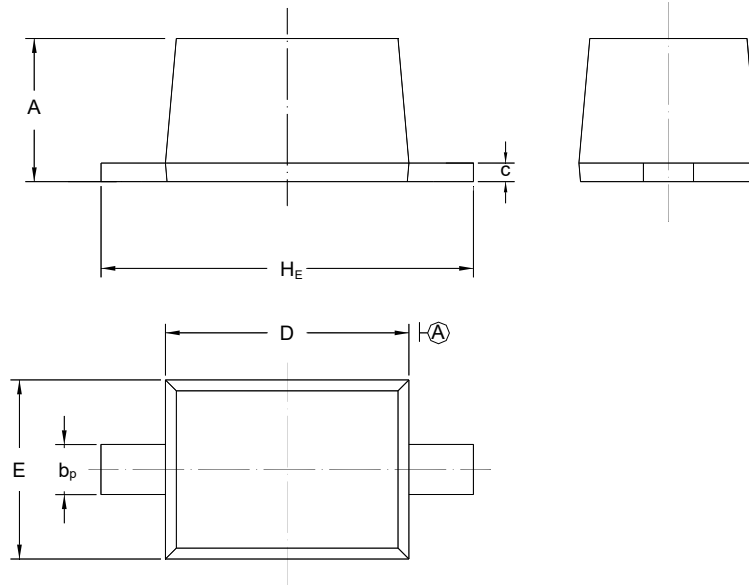


BAT60WS

PACKAGE OUTLINE

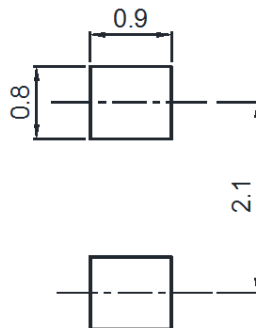
Plastic surface mounted package; 2 leads

SOD - 323



UNIT	A	b _p	C	D	E	H _E
mm	1.10 0.80	0.40 0.25	0.15 0.10	1.80 1.60	1.35 1.15	2.80 2.30

Recommended Soldering Footprint



Packing information

Package	Tape Width (mm)	Pitch		Reel Size		Per Reel Packing Quantity
		mm	inch	mm	inch	
SOD-323	8	4 ± 0.1	0.157 ± 0.004	178	7	3,000

Marking information

" III " = Cathode line

" FP " = Part No.

Font type: Arial

