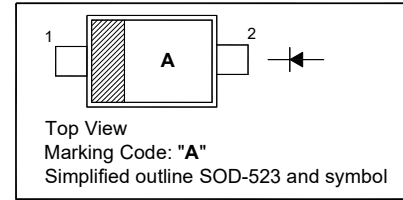


BAS216WT

Silicon Epitaxial Planar Switching Diode

PINNING

PIN	DESCRIPTION
1	Cathode
2	Anode

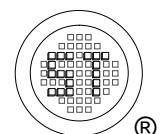


Absolute Maximum Ratings ($T_a = 25^\circ\text{C}$)

Parameter	Symbol	Value	Unit
Repetitive Peak Reverse Voltage	V_{RRM}	85	V
Reverse Voltage	V_R	75	V
Continuous Forward Current	I_F	250	mA
Repetitive Peak Forward Current	I_{FRM}	500	mA
Non-Repetitive Peak Forward Surge Current	I_{FSM}	at $t = 1 \mu\text{s}$ 4	A
		at $t = 1 \text{ms}$ 1	
		at $t = 1 \text{s}$ 0.5	
Power Dissipation	P_{tot}	150	mW
Thermal Resistance Junction to Ambient	$R_{\theta JA}$	833	$^\circ\text{C/W}$
Junction Temperature	T_j	150	$^\circ\text{C}$
Storage Temperature Range	T_{stg}	- 65 to + 150	$^\circ\text{C}$

Characteristics at $T_a = 25^\circ\text{C}$

Parameter	Symbol	Max.	Unit			
Forward Voltage at $I_F = 1 \text{mA}$ at $I_F = 10 \text{mA}$ at $I_F = 50 \text{mA}$ at $I_F = 150 \text{mA}$	V_F	715 855 1000 1250	mV			
Reverse Current at $V_R = 25 \text{V}$ at $V_R = 75 \text{V}$ at $V_R = 25 \text{V}, T_J = 150^\circ\text{C}$ at $V_R = 75 \text{V}, T_J = 150^\circ\text{C}$		I_R		30 1 30 50	nA μA μA μA	
Total Capacitance at $V_R = 0 \text{V}, f = 1 \text{MHz}$				C_T	2	pF
Reverse Recovery Time at $I_{rr} = 0.1 \times I_R, I_F = 10 \text{mA}, R_L = 100 \Omega, V_R = 6 \text{V}$				t_{rr}	4	ns



Electrical Characteristics Curves

Fig 1. Power Dissipation vs. Temperature

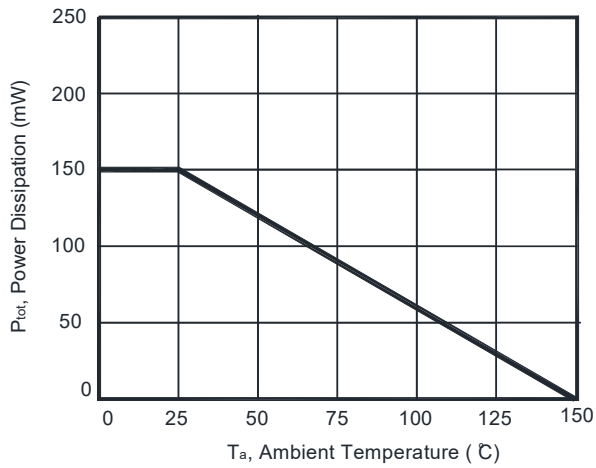


Fig 2. Total Capacitance vs. Reverse Voltage

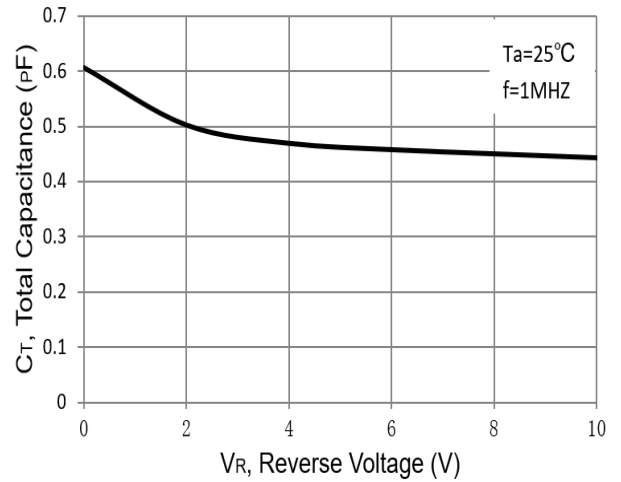


Fig 3. Reverse Current vs. Reverse Voltage

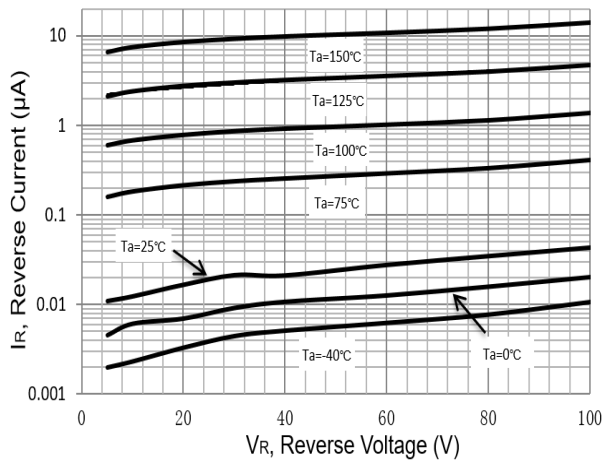
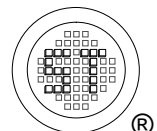
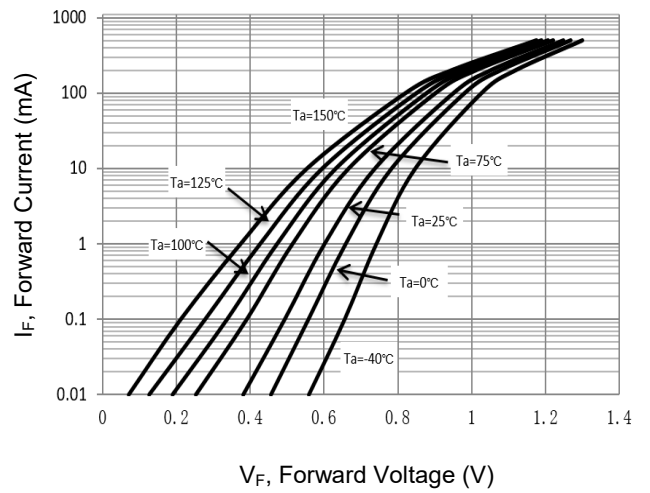


Fig 4. Forward Characteristics

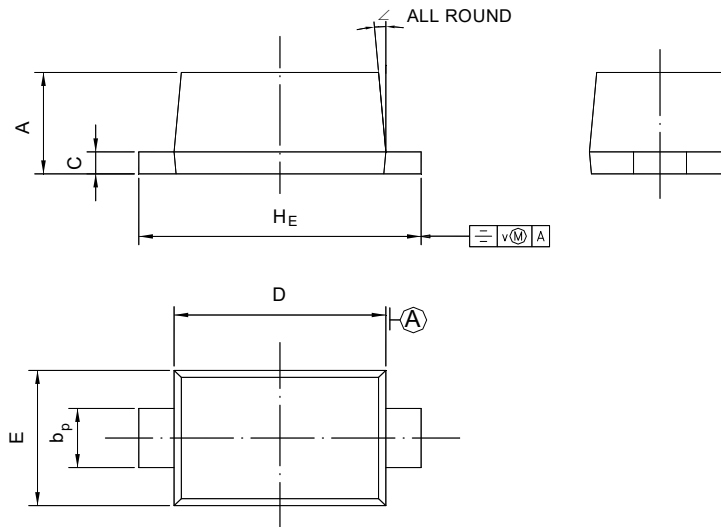


BAS216WT

PACKAGE OUTLINE

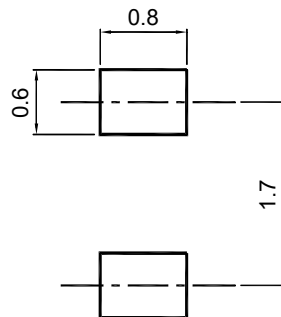
Plastic surface mounted package; 2 leads

SOD-523



UNIT	A	b _p	C	D	E	H _E	V	∠
mm	0.70 0.60	0.4 0.3	0.135 0.100	1.25 1.15	0.85 0.75	1.7 1.5	0.1	5°

Recommended Soldering Footprint



Packing information

Package	Tape Width (mm)	Pitch		Reel Size		Per Reel Packing Quantity
		mm	inch	mm	inch	
SOD-523	8	4 ± 0.1	0.157 ± 0.004	178	7	4,000

Marking information

" III " = Cathode line

" A " = Part No.

Font type: Arial

