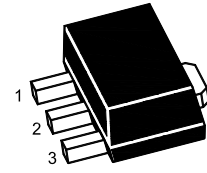


2SC4379U

NPN Silicon Epitaxial Planar Power Transistor



1.Base 2.Collector 3.Emitter
SOT-89 Plastic Package

Applications

- For power amplification applications

Absolute Maximum Ratings ($T_a = 25^\circ\text{C}$)

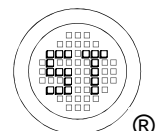
Parameter	Symbol	Value	Unit
Collector Base Voltage	V_{CBO}	50	V
Collector Emitter Voltage	V_{CEO}	50	V
Emitter Base Voltage	V_{EBO}	5	V
Collector Current	I_C	2	A
Base Current	I_B	0.4	A
Total Power Dissipation	P_{tot}	0.5 ¹⁾ 1 ²⁾	W
Junction Temperature	T_j	150	$^\circ\text{C}$
Storage Temperature Range	T_{stg}	- 55 to + 150	$^\circ\text{C}$

Thermal Characteristics

Parameter	Symbol	Max.	Unit
Thermal Resistance from Junction to Ambient	$R_{\theta JA}$	250 ¹⁾ 125 ²⁾	$^\circ\text{C/W}$

¹⁾ Device mounted on FR-4 substrate PC board, 2oz copper, with minimum recommended pad layout.

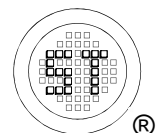
²⁾ Device mounted on FR-4 substrate PC board, 2oz copper, with 1-inch square copper plate.



2SC4379U

Characteristics at $T_a = 25^\circ\text{C}$

Parameter	Symbol	Min.	Typ.	Max.	Unit
DC Current Gain at $V_{CE} = 2\text{ V}$, $I_C = 0.5\text{ A}$ at $V_{CE} = 2\text{ V}$, $I_C = 1.5\text{ A}$ Current Gain Group O Y	h_{FE}	70	-	140	-
	h_{FE}	120	-	240	-
	h_{FE}	40	-	-	-
Collector Base Cutoff Current at $V_{CB} = 50\text{ V}$	I_{CBO}	-	-	100	nA
Emitter Base Cutoff Current at $V_{EB} = 5\text{ V}$	I_{EBO}	-	-	100	nA
Collector Base Breakdown Voltage at $I_C = 100\text{ }\mu\text{A}$	$V_{(BR)CBO}$	50	-	-	V
Collector Emitter Breakdown Voltage at $I_C = 10\text{ mA}$	$V_{(BR)CEO}$	50	-	-	V
Emitter Base Breakdown Voltage at $I_E = 100\text{ }\mu\text{A}$	$V_{(BR)EBO}$	5	-	-	V
Collector Emitter Saturation Voltage at $I_C = 1\text{ A}$, $I_B = 50\text{ mA}$	$V_{CE(sat)}$	-	-	0.5	V
Base Emitter Saturation Voltage at $I_C = 1\text{ A}$, $I_B = 50\text{ mA}$	$V_{BE(sat)}$	-	-	1.2	V
Transition Frequency at $V_{CE} = 2\text{ V}$, $I_C = 500\text{ mA}$	f_T	-	120	-	MHz
Collector Output Capacitance at $V_{CB} = 10\text{ V}$, $f = 1\text{ MHz}$	C_{ob}	-	8.5	-	pF



Electrical Characteristics Curves

Fig. 1 Output Characteristics Curve

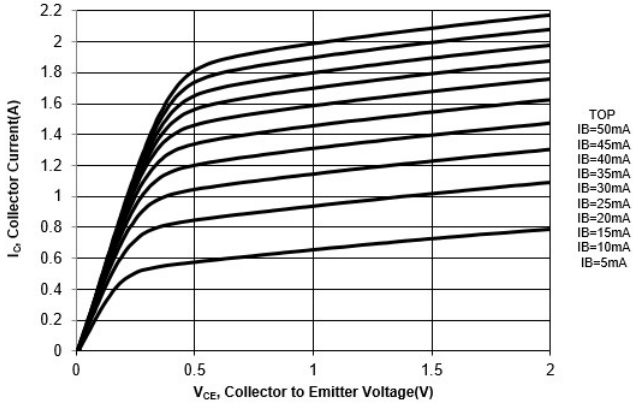


Fig. 2 Collector Current vs. V_{BE}

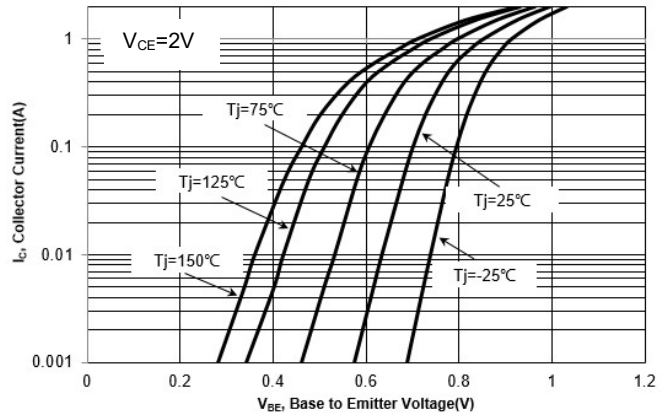


Fig. 3 h_{FE} vs. Collector Current

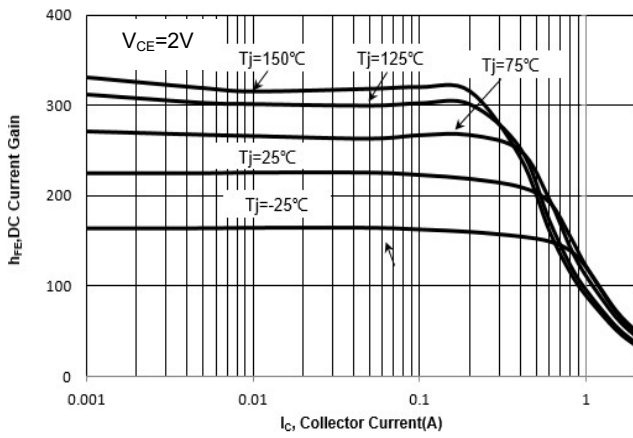
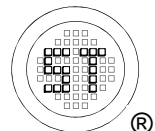
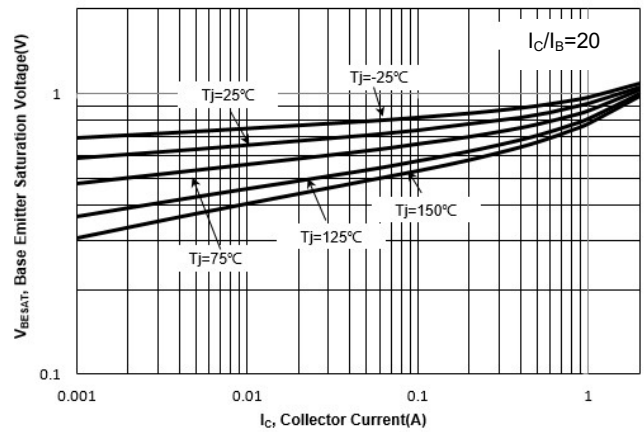


Fig. 4 $V_{BE(sat)}$ vs. Collector Current



2SC4379U

Electrical Characteristics Curves

Fig. 5 $V_{CE(sat)}$ vs. Collector Current

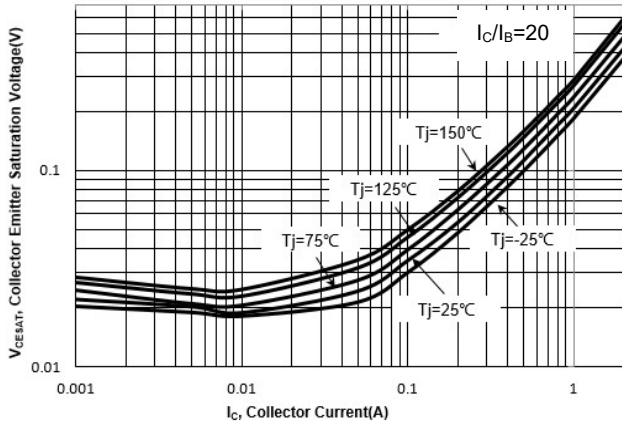


Fig 6. Output Capacitance

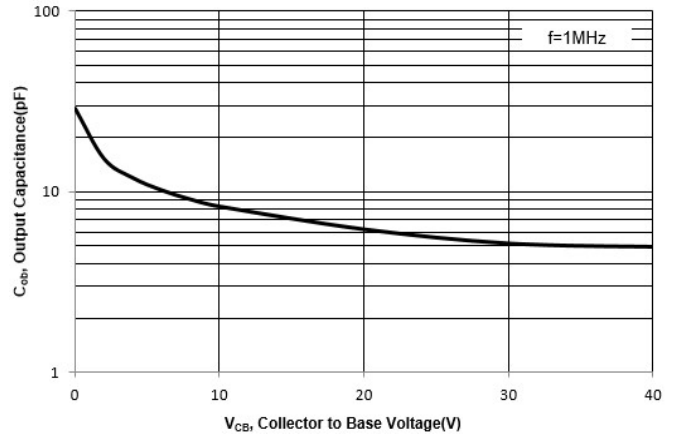
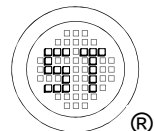
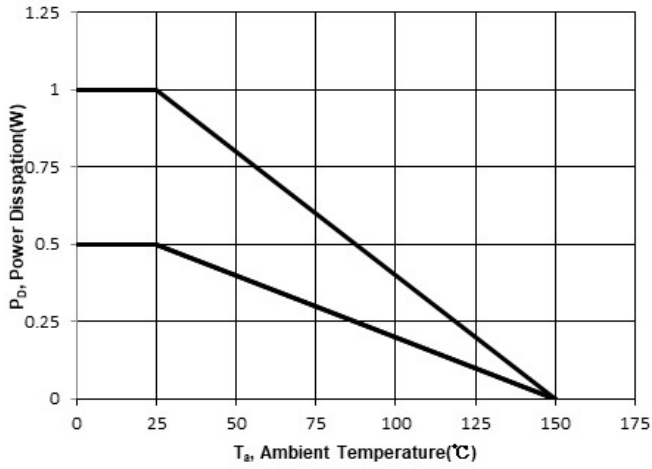


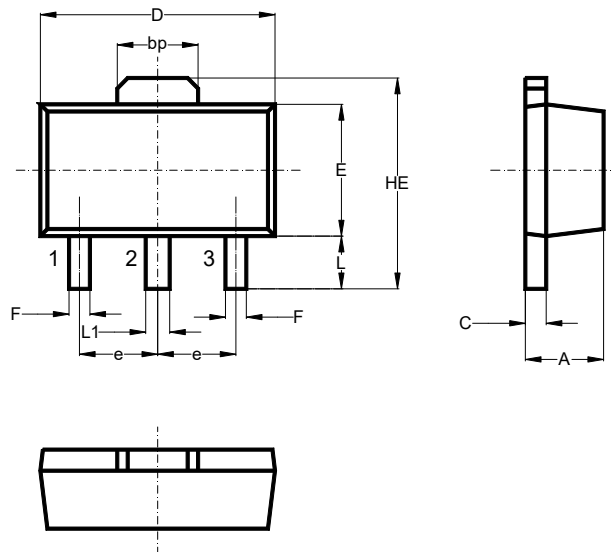
Fig. 7 Power Derating Curve



2SC4379U

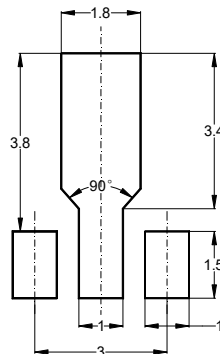
Package Outline (Dimensions in mm)

SOT-89



Unit	A	bp	C	D	E	F	HE	e	L	L1
mm	1.6	1.60	0.5	4.6	2.6	0.45	4.25	1.5	1.05	0.51
	1.4	1.50	0.3	4.4	2.4	0.35	3.75	typ.	0.95	0.41

Recommended Soldering Footprint



Packing information

Package	Tape Width (mm)	Pitch		Reel Size		Per Reel Packing Quantity
		mm	inch	mm	inch	
SOT-89	12	8 ± 0.1	0.315 ± 0.004	178	7	1,000
				330	13	4,000

Marking information

" 2SC4379*U " = Part No. (" * " = HFE grouping Code)

"YM" = Date Code Marking

"Y" = Year

"M" = Month

Font type: Arial

